

RebarCAD 2026.1

Release Notes



GLOBAL CONSTRUCTION
SOFTWARE AND SERVICES



Microsoft
Partner

Contents

Release notes	4
Version 2026.1 [Mar 2026]	4
Version Numbers	4
Version 2026.0 [Dec 2025]	7
Version Numbers	7
Version 2025.0 [03 Dec 2024]	14
Version 2024.0 [19 Sep 2023]	15
Version 2023.10 [17 Mar 2023]	17
Version 2023.0 [07 Oct 2022]	21
Version 2022.10 [22 Apr 2022]	22
Version 2022.0 [30 July 2021]	25
Version 2021.10 [22 January 2021]	30
Version 2021.0 [19 August 2020]	32
Version 2020.0	39
Version 2019.0	41
Version 2018.1	43
Version 2018.0	47
Version 2017.10	48
Version 2017	49
Version 2016.1	50
Version 2016	52
Version 2015.1	52
Version 2015	54
Version 9.12 Service Pack (Build 1819)	55
Version 9.12	55
Version 9.11 Service Pack (Build 1713)	57
Version 9.11	57
Version 9.10	58
Version 9.09 Service Pack (Build 1611)	59
Version 9.09	60
Version 9.08 Service Pack (Build 1548)	61
Version 9.08	61
Version 9.07 Service Pack (build 1498)	63
Version 9.07	63
Version 9.06	64

Version 9.05	64
Version 9.04	65
Version 9.03	66
Version 9.02	67
Version 9.01	68

Release notes

Thank you for upgrading to the latest version of **RebarCAD India**.

These release notes summarise the enhancements and corrections that have been made for each release of the product.

Version 2026.1 [Mar 2026]

Version Numbers

Product	Version
RebarCAD	v2026.1 (Build 5174)
CADS Scale	v2026.0 (Build 5110)
CADS Viewport Manager	v2026.0 (Build 5110)
CADS Drawing Environment	v2026.0 (Build 5110)
CADS Stock Bar Optimiser	v26.0 (Build 2)
Smart Slab Detailer	v2026.0 (Build 5102)
CADS AutoCAD Support	v2026.1 (Build 5107)
CADS Software Licence Manager	v25.6
CADS Application Support	v2.0 (Build 562)
CADS Detailing Windows Support	v1.0 (Build 17)

1. Member improvements

Enhancements have been made to reset all details of the selected members to ensure that the member quantity is set correctly.

2. Report improvements

A new database field to support a Drawing Title specific to each drawing sheet within a project has been introduced in the following report formats:

- ▶ REPX Reports;
- ▶ Excel Reports;
- ▶ Schedule on Drawing.

The REPX report templates created in the v2025.0 or lower versions can now be migrated automatically to the v2026.0 format. The migration will take place in the following scenarios:

- ▶ When configuring an REPX template created in v2025.0 or earlier;
- ▶ When printing reports configured with an REPX template created in v2025.0 or earlier;
- ▶ When previewing reports configured with an REPX template created in v2025.0 or earlier;
- ▶ When customising an REPX template created in v2025.0 or earlier;
- ▶ When customising an REPX template created in v2025.0 or earlier via the configuration centre.

3. Schedule improvements

The maximum number of decimal places permitted for Weight and Total Weight in the Localisation Settings can be configured to a value greater than three through the Schedule configuration (.xml) file, if required.



```

1440     </TotalLength>
1441   </Dimension>
1442   <Weight DefaultVal="Metric" UserVal="Metric" DataType="2" OptionType="Standard">
1443     <Options>Metric</Options>
1444     <Options>Imperial</Options>
1445     <Weight DefaultVal="kgs" UserVal="kgs" DataType="2" OptionType="Standard">
1446       <Options>kgs</Options>
1447       <Options>tonnes</Options>
1448       <Precision DefaultVal="3" UserVal="3" DataType="0" >
1449         <MaxAllowedPrecision DefaultVal="4" UserVal="4" DataType="0" />
1450     </Precision>
1451   </Weight>
1452   <TotalWeight DefaultVal="tonnes" UserVal="tonnes" DataType="2" OptionType="Standard">
1453     <Options>kgs</Options>
1454     <Options>tonnes</Options>
1455     <Precision DefaultVal="3" UserVal="3" DataType="0" >
1456       <MaxAllowedPrecision DefaultVal="4" UserVal="4" DataType="0" />
1457     </Precision>
1458   </TotalWeight>
1459 </Weight>
  
```

A defect causing incorrect sorting of bar marks when the first sort order was set to size in a specific sequence has been fixed.

4. LISP API improvements

The following new RC API have been introduced.

- ▶ CADS_RCL_ORDER_RELEASE - This function allows setting the ordered status of all bars associated with a specific release number to 'Ordered'. As a prerequisite, the Schedule page must be kept open before executing this command.
- ▶ CADS_RCL_UNORDER_RELEASE - This function allows setting the ordered status of all bars associated with a specific release number to 'UnOrdered'. As a prerequisite, the Schedule page must be kept open before executing this command.
- ▶ CADS_RCL_SET_RELEASE - This function allows setting the desired release number as the current release number. Bars drawn after using this function will be assigned the current release number.
- ▶ CADS_RCL_SET_BID_ITEM - This function allows setting the desired bid item as the current bid item. Bars drawn after using this function will be assigned to the current bid item.

5. CADS Bar Shape Creator improvements

The CADS Bar Shape Creator has been enhanced to support rearranging the listing position of shapes within a project using drag-and-drop, providing an improved organisation experience.

6. aSa file output (.RDX)

Enhancements have been made in the Mesh Calculator to assign catalogue number and part number of the accessories, so that they can be output in the aSa (RDX) output.

7. Defect fixes

A defect where the range line colour was set to the colour of the bar under a specific sequence has been fixed.

A defect where stretching a range took longer than expected under a specific sequence has been fixed.

A defect where non-standard AutoCAD colours were listed incorrectly in the following Detailer tools has been fixed:

- ▶ Highlight Bars;
- ▶ Mesh Calculator;
- ▶ Trim Openings;
- ▶ Radial Bar Detailer;
- ▶ Area Detailer;
- ▶ Split Range.

Version 2026.0 [Dec 2025]

Version Numbers

Product	Version
RebarCAD	v2026.0 (Build 5168)
CADS Scale	v2026.0 (Build 5110)
CADS Viewport Manager	v2026.0 (Build 5110)
CADS Drawing Environment	v2026.0 (Build 5110)
CADS Stock Bar Optimiser	v26.0 (Build 2)
Smart Slab Detailer	v2026.0 (Build 5102)
CADS AutoCAD Support	v2026.0 (Build 5105)
CADS Software Licence Manager	v25.6
CADS Application Support	v2.0 (Build 562)
CADS Detailing Windows Support	v1.0 (Build 17)

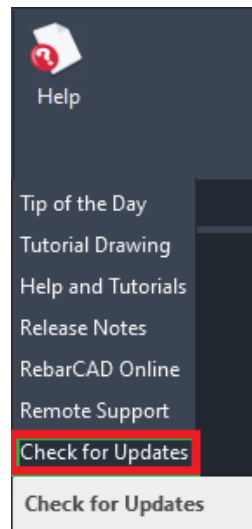
1. AutoCAD Support

RebarCAD 2026.0 supports the following Autodesk platforms:

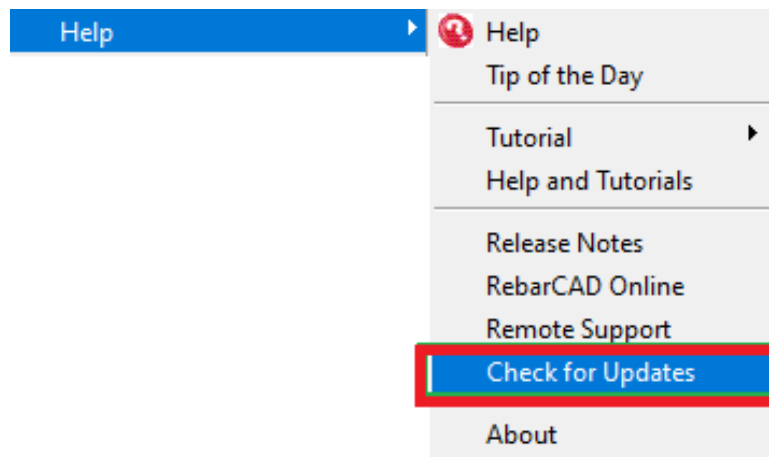
AutoCAD Vertical	Supported Versions
AutoCAD	2026
AutoCAD Architecture	2026

2. Check for Updates

The availability of the next update version can be verified directly within the product. This functionality can be accessed via the Ribbon Panel by navigating to Help > Check for Updates.



Alternatively, it can be accessed by executing the command **CADS_RC_CHECK_FOR_UPDATES** or via the menu path **RebarCAD > Help > Check for Updates**.



3. Bar Drawing/Edit Bar Label Data dialog

The Bar Drawing and the Edit Bar Label Data dialogs have been enhanced with increased width of the Release, Member and Drawing Sheet input fields.

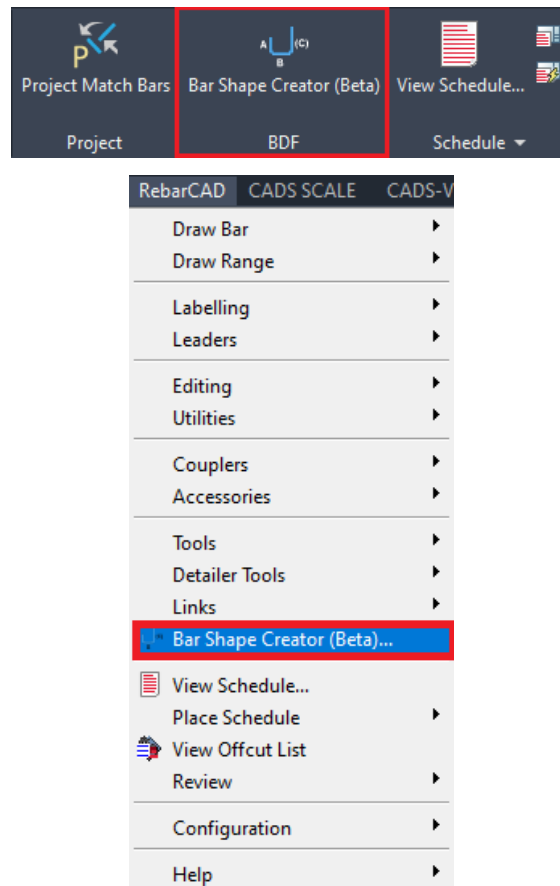
4. Annotation improvements

Enhancements have been made to support multiple formats for various bar references within a drawing.

A defect that caused extra text to appear in the bar mark, even though it wasn't configured in the bar mark format, during a specific sequence has been fixed.

A defect that caused the next bar mark to display as 0 during a specific sequence has been fixed.

5. CADS Bar Shape Creator



The Bar Shape Creator contains the functionality to create unique Shape Codes within RebarCAD. Once the bend type has been drawn, the Bar Shape Creator can validate the shape and generate a Bar Definition File (BDF) along with shape sketches and slide diagrams for the schedule. The Bar Shape Creator supports inclined bar legs, hooks, arcs, semi-circles and Couplers.

6. Range improvements

A defect where adjusting the ends of multiple pitch ranges was not working as expected has been fixed.

A defect where modifications to hook dimensions made through the Range Edit dialog were not retained has been fixed.

A defect related to range text configuration when setting an empty value has been fixed.

7. Release improvements

Enhancements have been made to

- ▶ Automatically set the value of the 'Release Description' field in the Release dialog based on the value entered in the 'Release Description Line 1' field in the Release Properties dialog, according to the schedule configuration settings.
- ▶ Enable resizing of the Release dialog;
- ▶ Enable resizing of the Release Properties dialog;

- ▶ Reset Release dialog position to its default location.

A defect that prevented the warning message for the release description from being shown at a specific sequence has been fixed.

A defect that caused an incorrect ordered date to be set for a release at a specific sequence has been fixed.

An issue related to the sequencing of the releases created using the RC LISP API has been fixed.

8. Member improvements

Enhancements have been made to

- ▶ Enable resizing of the Member dialog;
- ▶ Reset Member dialog position to its default location.

9. Harris output (.TSV) improvements

An issue in the Harris (.TSV) output, occurring with certain combinations of bar mark and prefix, has been resolved.

10. Coupler improvements

Enhancements have been made to

- ▶ Enable updating coupler-related modifications for multiple bar sets simultaneously;
- ▶ Allow copying and pasting of bars with attached coupler data across drawings;
- ▶ Set the rotation angle for the coupler text for bars attached with coupler data;
- ▶ Ensure that coupler data is attached to copied bars when using CTRL+C and CTRL+V commands.

A defect causing the coupler label to appear in an incorrect position when adding a coupler in a section view has been fixed.

A defect related to the scaled diagram in the Coupler dialog, where straight bars with 0 length were displayed incorrectly, has been fixed.

A defect in the CADs Scale environment that caused incorrect scaling of the coupler label text in a specific sequence has been fixed.

A defect that occurred when adding a section view for a bar with attached couplers at a specific sequence has been fixed.

A defect in the CADs Viewport Manager environment that caused incorrect scaling of the coupler label text in a specific sequence has been fixed.

11. Shape code improvements

A defect related to the shape code not being validated for case insensitivity has been fixed.

The label sketches for shape codes 100, 110, 132, 157, 162, 151, 105, 155 have been updated.

12. Schedule improvements

Enhancements have been made to the schedule to support a new field for coupler data.

13. Select Bars/Highlight Bars improvements

The Select Bars and Highlight Bars dialogs have been enhanced to include a new field for the Billing Code.

14. Save as V2022.0 Drawing...

The new 'Save as V2022.0 Drawing...' allows to save back the drawings created in RebarCAD 2026.0 and higher versions to V2022.0 drawing file format.

This command can be accessed in one of the following ways:

- ▶ Using the 'Save as V2022.0 Drawing...' menu in RebarCAD->Utilities pop-up menu;
- ▶ Using the command "CADS_RC_SAVE_AS_V2022" from the command prompt.

15. New generation macros

Several enhancements and bug fixes have been implemented in the following macros:

- ▶ Area Detailer;
- ▶ Split Range;
- ▶ Radial Bar Detailer;
- ▶ Change Range Type;
- ▶ Trim Openings;
- ▶ Show All bars in Range;
- ▶ Share Range Line.

16. RC LISP API improvements

The existing RC LISP API, CAD\$RCL_UPCCNUM, has been enhanced to set the hidden multiplier.

A bug where the schedule didn't report the total number of bars for a specific sequence has been fixed.

A defect related to the LISP API, CAD\$RCL_LABEL_BAR, which was causing duplicate labels to be created at a specific sequence, has been fixed.

A new RC LISP API has been introduced to retrieve all dimensions of a bar.

A new RC LISP API, CAD\$RCL_UPCCNUMHIDMULT, has been introduced to set the hidden multiplier. This function helps to update the Centre to Centre spacing, number of bars, multiplier & hidden multiplier.

Syntax:

(CAD\$RCL_UPCCNUMHIDMULT BarName as EntityName, CCSpacing as real, NumberOfBars as integer, Multiplier as integer, HiddenMultiplier as integer)

Sample Code:

(CAD\$RCL_UPCCNUMHIDMULT Barename 100 10 5 2)

Sample Program:

```
(defun C:UpCCNumHidMult ()  
(CAD$RCL_ACAD_TOGGLE)  
(setq Barename (cdr (car (entget (car (entsel "Select an existing Rc Object" :))))))  
  CCValue (getreal "\nEnter new C/C Spacing ")  
  NoBars (getint "\nEnter the number of bars: ")  
  multi (getint "\nEnter the number of Multiplier: ")  
  hiddenmulti (getint "\nEnter the Hidden Multiplier: ")  
)  
(CAD$RCL_UPCCNUMHIDMULT Barename CCValue nobars multi  
hiddenmulti)  
(CAD$RCL_ACAD_TOGGLE)  
)
```

17. Defect fixes

A defect related to the Windows 11 24H2 upgrade has been fixed.

A defect related to delay in double click opening a drawing configured with a larger size BDF file has been fixed.

A defect that caused the product to show an unlicensed warning at a specific sequence, even when the internet was connected, has been fixed.

A defect that caused the product to show an unlicensed warning at a specific sequence, after sleep and hibernate mode, has been fixed.

A defect related to cloud licensing and interval limits at a specific sequence has been fixed.

A defect causing a database corruption warning to appear in a new drawing under certain conditions has been resolved.

An issue causing database corruption when changing the range type to 'Dimension Line' through multiple selection has been resolved.

Fixed an issue where the check database command did not resolve release mismatches at specific sequences.

A defect in which the Global Configuration dialog displayed configurations with longer names incompletely has been resolved.

The defect wherein DEF files created in a lower version were not automatically migrated to a higher version under a specific sequence has been resolved.

Version 2025.0 [03 Dec 2024]

1. AutoCAD Support

RebarCAD 2025.0 supports the following Autodesk platforms:

AutoCAD Vertical	Supported Versions
AutoCAD	2025
AutoCAD Architecture	2025

2. Coupler improvements

Enhancements have been made to

- ▶ Retain the coupler data in the accessories list and the schedule, after deleting the views or coupler symbols of the bars attached with couplers.

A defect related to assigning couplers to a bar with zero length using LABEL_NEW_MARK command has been fixed.

A defect related to coupler data not getting updated to the accessories list on drawing, after changing the size of the bars attached with coupler has been modified.

A defect related to refreshing the accessories list, when the coupler data file is missing has been fixed.

A defect related to refreshing the accessories list at a particular sequence, when using the CADS_RC_REDRAW command has been fixed.

A defect related to updating the coupler data on changing the size of the bar has been fixed.

A defect related to assigning a coupler to a bar with 0 quantity has been fixed.

3. Cloud Licensing

Enhancements have been made to

- ▶ Support offline mode;
- ▶ Log the license check sequences for troubleshooting;
- ▶ Support total agility field for minimum version allowed;
- ▶ Support account based licensing.

4. Annotation improvements

Enhancements have been made to

- ▶ Support special symbols -\$#* in the bar mark and prefix;
- ▶ Support a new bar mark format for straight bars with end treatment;
- ▶ Support a new tag format for straight bars with end treatment;
- ▶ Configure range text for single indicator range;

A defect related to bar mark getting updated at a specific sequence has been fixed.

A defect related to bar reference when a space is used between the tags and the Draw Dimension Label/Leaders option is enabled has been fixed.

5. CADS RC LISP API improvements



The "CADS_RCL_ENTGET" LISP API is enhanced to include the new field to retrieve the bid Item of the couplers attached with the bar set.

A defect related to retaining the release properties at a specific sequence has been fixed.

A defect related to the note value not retaining in the bar label using LISP API has been fixed.

6. Viewport Manager LISP API improvements

The LISP command, "CADS_VPML_CREATE_LAYOUT" has been enhanced to

- ▶ Configure the layer name for the layout to be created.

7. Release improvements

Enhancements have been made to

- ▶ Allow resizing of the Order Materials dialog;
- ▶ Configure the maximum length and the mapping field for the default value of Release Description in the Release Properties dialog;
- ▶ Configure the maximum character limit for release description in the release dialog.

A defect related to release weight, when sub releases are assigned to releases has been fixed.

A defect related to release description not getting reported on the schedule on drawing, when sub release exists for a release, has been fixed.

A defect related to a warning message in the Order Materials dialog has been fixed.

8. Schedule improvements

Enhancements have been made to

- ▶ Support the %UserName% in the configurations related to filenames;

A defect related to the schedule reporting blank values for some fields at a specific sequence has been fixed.

A defect related to PDF Export at a specific sequence has been fixed.

9. Defect fixes

A defect related to opening drawings, when the current default detailing standard is set other than the default standard has been fixed.

A defect related to the range line drawn incorrectly for double indicator taper range for bent bars has been fixed.

Version 2024.0 [19 Sep 2023]

1. AutoCAD Support

RebarCAD 2024.0 supports the following Autodesk platforms:

AutoCAD Vertical	Supported Versions
AutoCAD	2022, 2023 & 2024
AutoCAD Architecture	2022, 2023 & 2024

2. Coupler improvements



A new global configuration, “STRGHTEPREFFORM” has been introduced to configure the bar reference format for straight bars attached with couplers.

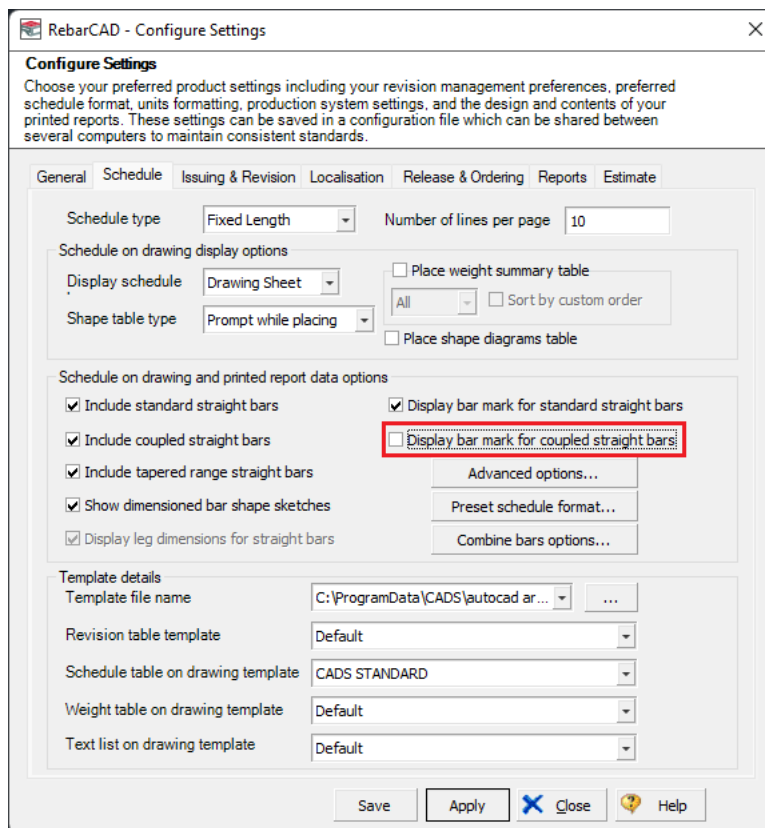
The coupler symbol configuration dialog is enhanced, to allow sequencing of the configured symbols, such that the frequently used symbols can be moved to the top of the list.

Enhancements have been made to draw the thread symbol on the drawing as per the original dimension of the symbol, for the selected manufacturer.

3. Schedule improvements

Enhancements have been made in the schedule to display the unit name in the column header, for the length and the weight fields in the formatted and free form view of the schedule.

Enhancements have been made to the schedule on drawing to include bar marks for straight bars attached with end treatment, based on the configuration.



If the configuration, “Display bar mark for coupled straight bars” is ticked ON, then the bar mark will be output for the straight bars attached with end treatments and if it is ticked OFF, then the bar mark will not be output on the schedule on drawing.

4. Enhancements have been made to support special symbols -**\$#*** in the bar mark and the bar mark prefix.
5. CADS RC LISP API improvements

A new LISP command, “CADS_RCL_NEWLABEL_EXTRACTMARK” has been introduced. This command allows to create a new bar label, by extracting the bar data from an existing bar of a known bar mark.

The existing LISP command, “CADS_RCL_DRAW_BAR” has been enhanced to set the bar label notes as an input parameter.

The existing LISP command, “CADS_RCL_LABEL_BAR” has been enhanced to set the bar label notes as an input parameter.

6. Viewport Manager LISP API improvements

The LISP command, “CADS_VPML_CREATE_LAYOUT” has been enhanced to

- ▶ Set the layout index for the new layout to be created;
- ▶ Set the drawing number attribute;
- ▶ Print the result as ‘T’ on successful creation of the layout;
- ▶ Fix a defect related to the scale value.

7. aSa file output (.RDX)

Enhancements have been made to

- ▶ Include bar marks for straight bars attached with end treatment, based on the configuration. If the configuration, “Include bar mark for straight bars (Coupled/Threaded)” is set to ‘Yes’, then the bar mark will be output for the straight bars attached with end treatments and if it is set to ‘No’, then the bar mark will not be output.
- ▶ Generate the output file in the name of the unique order number when multiple releases are selected for order.
- ▶ Validate for invalid release description and unique order number when multiple releases are selected for order.

8. Cloud Licensing

Enhancements have been made to

- ▶ Use the modified cloud license cache folder. i.e, C:\ProgramData\Cads\Cache\RC2D folder.
- ▶ Include cloud analytics support

A few defects related to node locked license at specific sequences have been fixed.

9. Defect fixes

A defect related to the bar label size getting resized on changing the bar label format in a specific sequence has been fixed.

A defect related to Excel Print of accessories has been fixed.

A defect related to the position of the Sub Release column in the Order Materials dialog has been fixed.

Version 2023.10 [17 Mar 2023]

1. AutoCAD Support

RebarCAD 2023.10 supports the following Autodesk platforms:

AutoCAD Vertical	Supported Versions
AutoCAD	2021, 2022 & 2023
AutoCAD Architecture	2021, 2022 & 2023

2. Annotation improvements

A new global configuration, "STRGHTPBARMARKFORMAT" has been introduced to configure the label format for straight bars attached with couplers.

Enhancements have been made in the label format configuration to support the new fields for the Extra Label Notes using the keywords listed below:

Extra Label Notes 1 - NOTE1

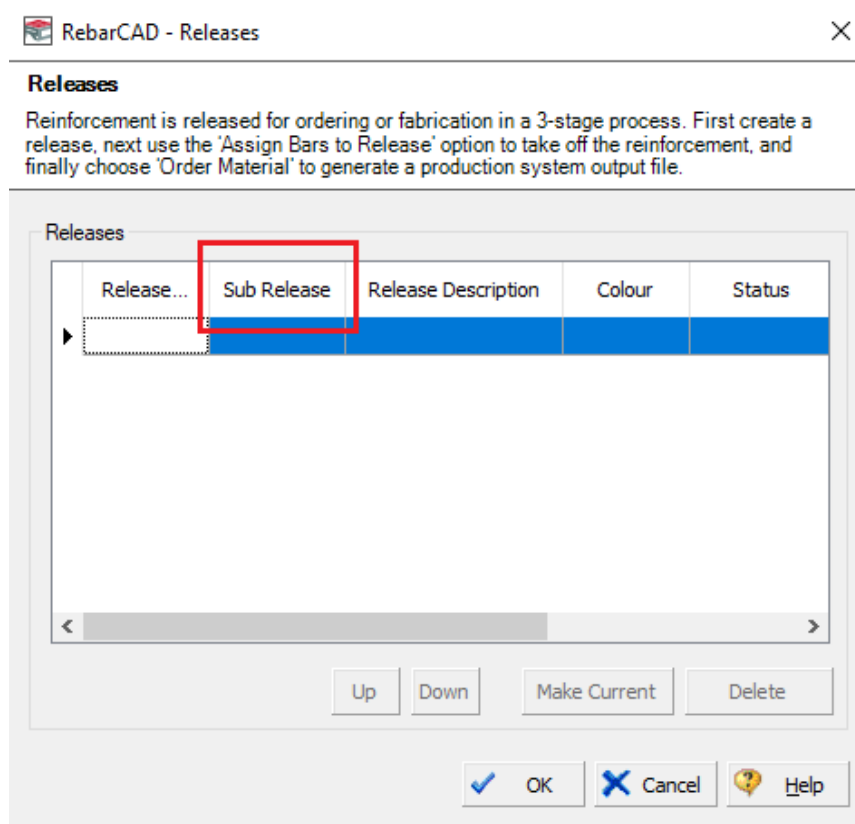
Extra Label Notes 2 - NOTE2

Extra Label Notes 3 - NOTE3

Extra Label Notes 4 - NOTE4

3. Sub release

The position of the “Sub Release” field in the Releases dialog has been moved next to the “Release Number” field for the convenience of editing as shown below:



A defect related to the sub releases in the Releases dialog has been fixed.

4. aSa file output (.RDX)

Enhancements have been made to

- ▶ Report the size number in the size field for the fractional bar sizes for the Plain bars;
- ▶ Report the MaterialTypeId as 'P' for the Plain bars.

5. aSa file output (.CAD)

Enhancements have been made to

- ▶ Support the 6P line Plain bars;
- ▶ Report the size number in the size field for the fractional bar sizes for the Plain bars.

A drawing specific defect related to ordering has been fixed.

6. RC LISP API improvements

A new LISP command, “CADS_RCL_NEWLABEL_MARK” has been introduced. This command allows to create a new bar label for a desired bar mark value.

7. CADS Viewport Manager improvements

A new LISP command, “CADS_VPML_CREATE_LAYOUT” has been introduced. This command allows to create a new layout in the drawing.

A new LISP command, “CADS_VPML_CREATE_VIEWPORT” has been introduced. This command allows to create a new viewport in the layout.

A defect related to the new layers getting created on adding new viewports has been fixed.

A defect related to the custom scale has been fixed.

8. Cloud Licensing

A defect related to the agility warning when the system is configured with non-English OS has been fixed.

A defect related to the node locked license at a specific sequence has been fixed.

A defect related to licensing at a specific sequence, when the system and the display user name are configured with non-English OS has been fixed.

A defect related to the check interval time has been fixed.

A defect related to unlicensing automatically at a specific sequence has been fixed.

9. Defect fixes

A defect related to the copied bar label, moving to the previous bar label’s location on editing the copied bar label has been fixed.

A defect related to the number of lines per page in the schedule report has been fixed.

A defect related to the display of bar size in the schedule has been fixed.

A defect related to the Match Bars specific to a drawing has been fixed.

A defect related to running the check database at a specific sequence has been fixed.

A defect related to configuring the bar grades and the sizes file of a larger size has been fixed.

A defect related to displaying the BDF filename in the draw bar dialog has been fixed.

A defect related to configuring the primary, secondary and tertiary bdf files with the longer filenames has been fixed.

A defect related to the step increment value changing to zero on moving a single indicator taper range in the Viewport Manager environment has been fixed.

A defect related to the quantity not getting updated for the tapered ranges with the step taper at a specific sequence has been fixed.

A defect related to the bars drawn in sketch mode without setting the bar dimensions not throwing appropriate warning message has been fixed.

A defect related to the display of the bar size in the formatted schedule view in a particular sequence has been fixed.

A defect related to the Excel output has been fixed.

A defect related to the bars and couplers getting duplicated at a specific sequence has been fixed.

Version 2023.0 [07 Oct 2022]

1. AutoCAD Support

RebarCAD 2023.0 supports the following Autodesk platforms:

AutoCAD Vertical	Supported Versions
AutoCAD	2021, 2022 & 2023
AutoCAD Architecture	2021, 2022 & 2023

2. aSa file output (.RDX)

A defect related to the unique order number in the Order Material dialog has been fixed.

A defect related to the supporting smooth rounded bars in the output has been fixed.

3. Coupler improvements

Improvements have been made in the LENTON couplers to

- ▶ report the drawn length and width based on the latest product brochures;
- ▶ support the soft metric sizes.

4. Defect fixes

A defect related to saving the drawings to V9.12 format has been fixed.

A defect related to getting the bar dimensions using the CADS_RCL_ENTGET function has been fixed.

A few defects related to cloud licensing have been fixed.

Version 2022.10 [22 Apr 2022]

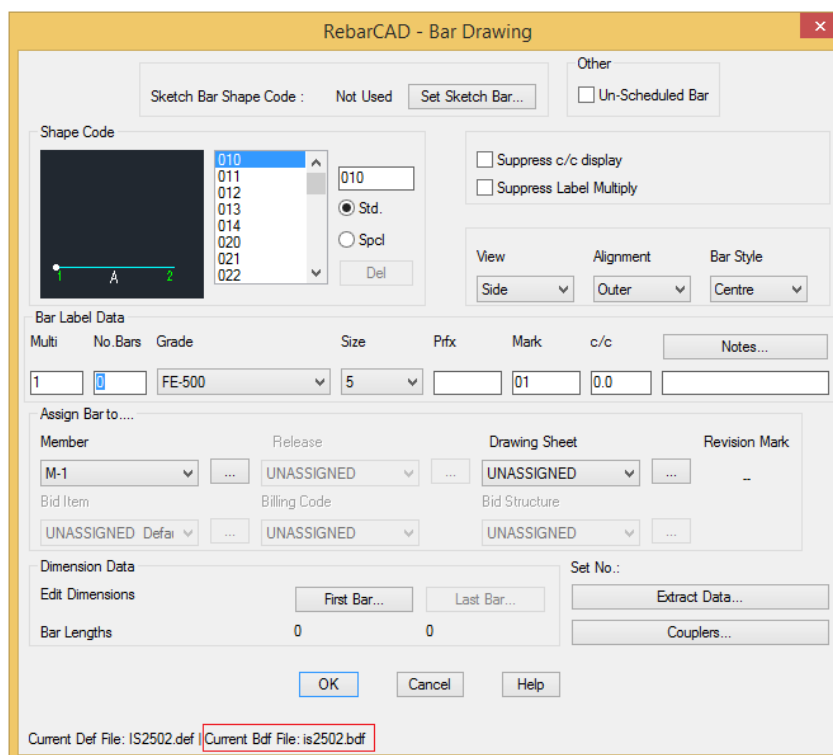
1. AutoCAD Support

RebarCAD 2022.10 supports the following Autodesk platforms:

AutoCAD Vertical	Supported Versions
AutoCAD	2020, 2021 & 2022
AutoCAD Architecture	2020, 2021 & 2022

2. Bar Drawing/Edit Bar Label Data dialog

The Bar Drawing and the Edit Bar Label Data dialogs have been enhanced to display the BDF file configured in the drawing as shown below:



3. Coupler improvements

Improvements have been made to report the bars attached with the couplers as a 99 shape based on the global configuration;

A new configuration, 'COUPLERBARDISPLAYSHAPE' has been introduced with a default value of 'NO' to maintain the existing workflow.

Once the configuration is set to **YES**, the shape code of the bar will be displayed as the shape code name configured in "SPECIALBARTEXT" global configuration. The default shape code configured in SPECIALBARTEXT is '99'.

Improvements have been made in the LENTON couplers to

- ▶ report the product description with the diameter and the coupler name;
- ▶ report the product description and the product codes as per the latest product brochures;
- ▶ support the threaded splicing systems;
- ▶ support the new coupler types.

Improvements have been made in the ANCON couplers to

- ▶ report the catalogue number with MBT prefix for MBT couplers;
- ▶ report the catalogue number as the manufacturer name for all coupler types except the MBT couplers;
- ▶ support a space in the Catalogue number;

Improvements have been made in the DEXTRA couplers to

- ▶ support the GRIPTEC couplers;
- ▶ support the new coupler types like Connection to structural steel, Pocket forms, Nailing plate and Stainless steel connectors;
- ▶ consider male and female sleeves as a single assembly to maintain catalogue number for the coupler types like Standard, Positional and Transitional;
- ▶ support part number for the coupler types like Bridging, Small headed bars, Large headed bars, Bolted bars and Weldable;

A defect related to the coupler attached to the plan view reporting a warning message during redraw has been fixed;

A defect related to printing the Catalogue No in the accessories list has been fixed;

A defect related to printing the coupler data in the accessories list, on changing the coupler symbol from thread to coupler has been fixed.

A defect related to the previous selection, selecting only the coupler and ignoring the bars after a specific sequence has been fixed.

A defect related to retaining the accessories list after deleting the bar view has been fixed.

A defect related to reporting the coupler details in the accessories list after a specific sequence has been fixed.

A defect related to the coupler position being reported incorrectly in the accessories list after a specific sequence has been fixed.

A defect related to the incorrect 'To Size' set has been fixed.

4. Soule file output (.SLE)

The dialog is enhanced to support the setting of the output filename.

A defect related to updating the existing dialog data after using the Reset option after a specific sequence has been fixed.

5. Soule file output (.XML)

The dialog is enhanced to support the setting of the output filename.

A defect related to updating the existing dialog data after using the Reset option after a specific sequence has been fixed.

6. SteelPAC and Ariadis file output (.SDI)

The dialog is enhanced to support the setting of the output filename.

7. RebarCAD file output (.CSF)

The dialog is enhanced to support the setting of the output filename.

A defect related to the product name being missed in the output filename after a specific sequence has been fixed.

A defect related to the number of lines per page getting changed after a specific sequence has been fixed.

A defect in which the number of lines per page was not matching with the configured number of lines after a specific sequence has been fixed.

A defect in which the coupler symbols were reported incorrectly after a specific sequence has been fixed.

A defect in which an incorrect total page number was reported after a specific sequence has been fixed.

8. aSa file output (.CAD)

The dialog is enhanced to support the setting of the output filename.

A defect related to the number of characters in the job number field has been fixed.

A defect in which the existing output file was getting replaced without any warning message has been fixed.

9. aSa file output (.RDX)

The dialog is enhanced to support the setting of the output filename.

A defect related to reporting the EPID and EPCODE in the coupler data has been fixed.

The number of characters for the “placing tag” in the release properties has been increased.

The order materials dialog is enhanced to set multiple control codes when multiple releases are selected for output.

Enhancements have been made to support the purple epoxy in the Coating Id.

Enhancements have been made to support the accessories in the output.

10. Sub release

A defect related to the incorrect filename being reported in the warning message in the order materials dialog after a specific sequence has been fixed.

A defect related to allowing to enter the sub release in the Release dialog, after synchronizing the release status from the external file has been fixed.

A defect in which the releases with sub releases were not being listed when the drawing was saved as the V9.04 format has been fixed.

A defect related to allowing restricted characters in the release number has been fixed.

A defect related to allowing restricted characters in the global configuration to split the sub release has been fixed.

11. RC LISP API improvements

A new LISP command, “CADS_RCL_CREATE_RELEASE” has been introduced. This command allows the creation of a new release number and provides the option to set it as the current release number in the drawing.

A new LISP command, “CADS_RC_ACC_REFRESH” has been introduced. This command allows the refreshing of the accessories list on the drawing.

12. CADS Viewport Manager improvements

Enhancements have been made to create new layouts with the ANNOALLVISIBLE variable set to 1.

A defect related to the tooltip not displaying the scale and the layout name in AutoCAD 2022 has been fixed.

13. New generation macros

Enhancements and defect fixes have been made in the following new generation macros:

- ▶ Area Detailer;
- ▶ Show All Bars in Range.

14. Licensing

A defect in which the CADS Software Licence Manager was being closed unexpectedly when clicking the cancel button after a specific sequence has been fixed.

A bug related to licensing the CADS RC/RebarCAD Extended Features enabling the unsupported licensing methods has been fixed.

15. Cloud Licensing

A defect related to the remote session has been fixed.

A defect related to the maximum supported version has been fixed.

A defect related to the code not returning after a specific sequence has been fixed.

A defect in which unlicensing was allowed while the application was open has been fixed.

16. Defect fixes

A defect related to stretching the range after a specific sequence has been fixed.

A defect related to the Management System File (PDF) output, when multipliers were used for tapered ranges after a specific sequence has been fixed.

A defect related to the corruption of configuration files in a specific environment, has been fixed.

A defect related to reporting the BidItemStatId has been fixed.

A defect related to copy & pasting the values in the bid item dialog has been fixed.

A defect in which the CADS Software Licence Manager was not being closed properly after unlicensing has been fixed.

A defect related to returning the floating license after a specific sequence has been fixed.

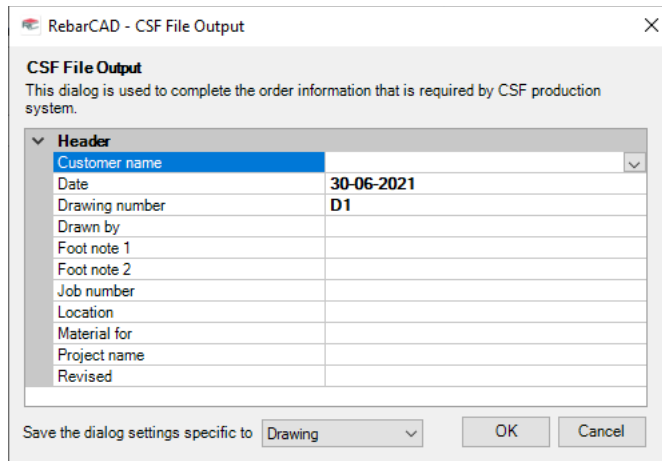
Version 2022.0 [30 July 2021]

1. AutoCAD Support

RebarCAD 2022.0 supports the following Autodesk platforms:

AutoCAD Vertical	Supported Versions
AutoCAD	2020, 2021 & 2022
AutoCAD Architecture	2020, 2021 & 2022

2. RebarCAD file output (.CSF)



- ▶ The fields in the dialog have been rearranged and segregated based on the purpose of the fields;
- ▶ The configuration file has been enhanced to control the visibility of the fields
- ▶ A new option to save the dialog settings specific to Drawing/Current user/All users has been introduced.

3. SteeLPAC and Ariadis file output (.SDI)

The dialog has been enhanced to support the resetting of the dialog settings to the installed state, by clicking on the new “Reset” button.

A defect related to spiral bars of specific shapes has been fixed.

4. aSa file output (.CAD)

The dialog has been enhanced to support the resetting of the dialog settings to the installed state, by clicking on the new “Reset” button.

The output has been enhanced to support 4 characters as the control code.

A defect related to the output configuration following a specific sequence has been fixed.

A defect related to switching between Imperial/Metric configuration settings has been fixed.

5. aSa file output (.RDX)

A validation to restrict the number of characters when printing the notes field has been introduced.

A few defects related to retaining the Bid item ID, Excuse code ID and Placing code ID have been fixed.

A defect has been fixed when setting the default value for the release description.

6. Soule file output (.SLE)

The dialog is enhanced to support the resetting of the dialog settings to the installed state, by clicking on the new “Reset” button.

7. Soule file output (.XML)

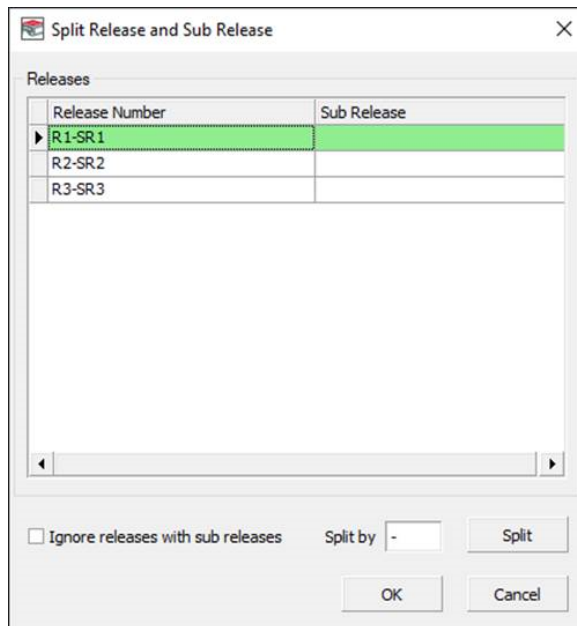
The dialog has been enhanced to support the resetting of the dialog settings to the installed state, by clicking on the new “Reset” button.

8. Sub release

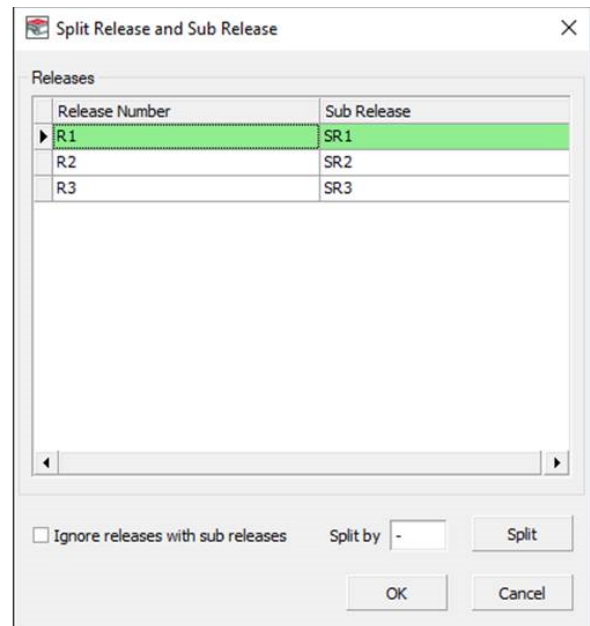
A new command, “CADS_RC_SPLITRELEASEANDSUBRELEASE” has been introduced.

Drawings created in V2021.0 or lower do not support the sub release option, if they are opened in V2022.0 or higher, this command helps to split the sub release from the release number.

For instance, if any of the release number in the drawing created in the older versions has release number and sub release separated by special character then, using this command will split the release number and sub release.



Before splitting



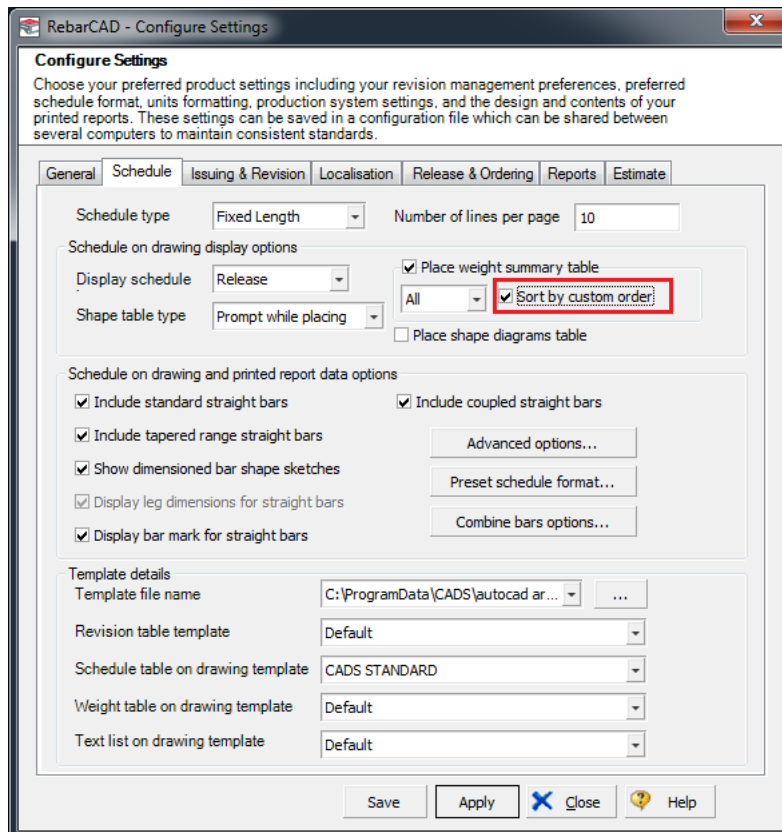
After splitting

9. Schedule on drawing

The following enhancements have been made:

1. Sorting of members/releases in the weight summary table, this can now be set to match the sort order in the respective member/release dialogs.

A new configuration setting “Sort by custom order” has been introduced as shown below:



2. Supports the following new fields:

- ▶ Release Description1 (<Db:ReleaseDescription1>);
- ▶ Release Description2 (<Db:ReleaseDescription2>)

10. RC LISP API improvements

A new LISP command, “CADs_RCL_CREATE_MEMBER” has been introduced. This command allows the creation of a new member title and provides the option to set it as the current member title in the drawing.

11. New generation macros

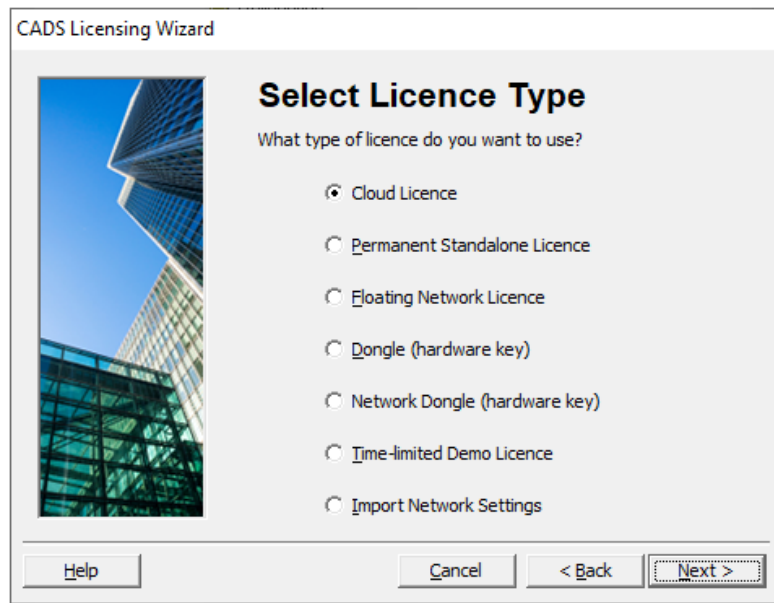
Enhancements and defect fixes have been made in the following new generation macros:

- ▶ Area Detailer;
- ▶ Draw Lap Dog Leg Bar;
- ▶ Share Range Line;
- ▶ Add Standee/Chair;
- ▶ Radial Bar Detailer;
- ▶ Mesh Calculator;

- ▶ Show All Bars in Range;
- ▶ Trim Openings.

12. Licensing

The CADS Licensing Wizard has been enhanced to place the Cloud Licence option as the first one in the list.



The Cloud license has been enhanced to specify the maximum supported versions and to generate the log files in a folder similar to all CADS products.

A defect related to cloud licensing using the proxy server has been fixed.

A defect related to converting the demo licence to full licence at a specific sequence has been fixed.

A defect related to importing the network settings in the CADS Software Licence Manager at a specific sequence has been fixed.

A defect related to displaying the licence information in the splash panels and about box at a specific sequence has been fixed.

A defect in which the cloud licence was getting locked at a specific sequence has been fixed.

13. Coupler improvements

Improvements have been made in such a way that the coupler data folder can be configured from a custom location, which is different from the default coupler data folder.

The Ancon coupler data is updated to include the following:

- ▶ New MBT transition coupler types;
- ▶ New Bartec plus coupler types;
- ▶ End adjustment values for TTP couplers.

The Lenton coupler data is updated to include the coupler with thread block for MT12 coupler types.

A defect related to the coupler symbol rotation, on using the actual size option has been fixed.

14. Defect fixes

- A few defects related to the Excel report have been fixed.
- A defect related to setting the drawing set number to more than 60 characters has been fixed.
- A defect related to reporting the damaged tapered range has been fixed.
- A defect in which the invalid flag was not placed for the schedule on drawing at a particular sequence has been fixed.
- A defect related to the bar reference scale factor getting changed automatically has been fixed.
- A defect has been fixed in which an invalid warning message was displayed on drawing a new bar view for an existing bar.

Version 2021.10 [22 January 2021]

1. AutoCAD Support

RebarCAD 2021.10 supports the following Autodesk platforms:

AutoCAD Vertical	Supported Versions
AutoCAD	2019, 2020 & 2021
AutoCAD Architecture	2019, 2020 & 2021

2. Sub release

A new field, Sub Release is added to the release properties to support ordering a main release with multiple sub releases

3. Title block improvements

New header and footer fields such as Code, Originator, Zone, Level, Type and Role have been supported.

New title block drawings with the enhanced header and footer fields have been included.

New templates for REPX report, schedule on drawing and Excel report have been included with the new header and footer fields.

4. Save as V9.12 Drawing...

The new 'Save as V9.12 Drawing...' allows you to save back the drawings created in RebarCAD 2021.10 and higher versions to V9.12 drawing file format.

This command can be accessed in one of the following ways:

- Using the 'Save as V9.12 Drawing...' menu in RebarCAD->Utilities pop-up menu.
- Using the command "CADS_RC_SAVE_AS_V912" from the command prompt.

5. aSa file output (.CAD)

When a v2021.1 drawing is saved back to an earlier version of RebarCAD, changes have been made to retain the aSa dialog settings.

A new field, Grade/Grade code is introduced, based on which Grade/Grade code will be output.

Enhancements are made to report the values of end preparation for the threaded bars.

Enhancements are made to output the main release with sub release.

6. aSa file output (.RDX)

When a v2021.1 drawing is saved back to an earlier version of RebarCAD, changes have been made to retain the aSa dialog settings.

Enhancements are made to report the values of end preparation for the threaded bars.

7. Soule file output (.XML)

When a v2021.1 drawing is saved back to an earlier version of RebarCAD, changes have been made to retain the Soule dialog settings.

Enhancements are made to highlight the mandatory fields more prominently.

8. Soule file output (.SLE)

When a v2021.1 drawing is saved back to an earlier version of RebarCAD, changes have been made to retain the Soule dialog settings.

Enhancements are made to highlight the mandatory fields more prominently.

9. SteelPAC and Ariadis file output (.SDI)

When a v2021.1 drawing is saved back to an earlier version of RebarCAD, changes have been made to retain the SteelPAC and Ariadis dialog settings.

10. New generation macros

Enhancements and defect fixes have been made in the following new generation macros:

- ▶ Share Range Line;
- ▶ Area Detailer;
- ▶ Split Range;
- ▶ Draw Lap Dog Leg Bar;
- ▶ Add Standee/Chair;
- ▶ Radial Bar Detailer;
- ▶ Highlight Bars.

11. RC LISP API improvements

The "CADS_RCL_ENTGET" LISP API is enhanced to include the following new fields:

- ▶ Release order status;
- ▶ Sub release;
- ▶ First bar length;
- ▶ Last bar length;
- ▶ Bid item;
- ▶ Coupler type attached to the end1 & end2;
- ▶ Coupler manufacturer attached to the end1 & end2;
- ▶ Coupler description attached to the end1 & end2;
- ▶ Coupler end treatment to the end1 & end2.

12. Viewport manager improvements

Create Layout command has been enhanced to set the default layout to the user's choice.

A defect in which the custom scale was shown incorrectly has been fixed.

A defect in which the viewport scale was not shown properly for a specific sequence has been fixed.

13. Defect fixes

A defect in setting bend rounding value to 0 has been fixed.

A few defects specific to some shape codes have been fixed.

A defect in which the layer colour of the schedule on drawing was incorrect has been fixed.

A defect related to release and specific to a particular AutoCAD has been fixed.

A defect related to removing prefix for a specific sequence has been fixed.

A few defects related to Windows 10 Pro Version 20H2 Operating System have been fixed.

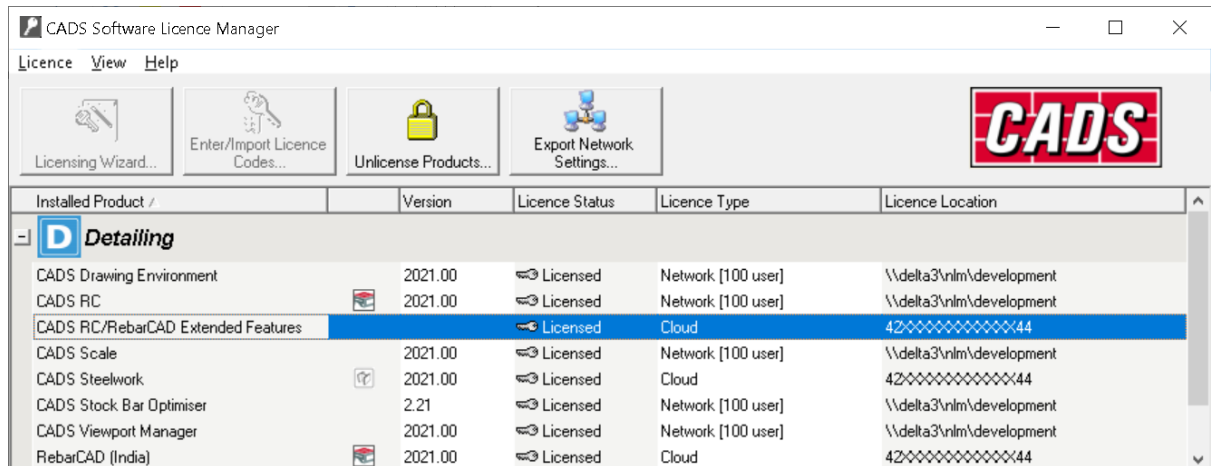
Version 2021.0 [19 August 2020]

1. AutoCAD Support

RebarCAD India 2021.0 supports the following Autodesk platforms:

AutoCAD Vertical	Supported Versions
AutoCAD	2019, 2020 & 2021
AutoCAD Architecture	2019, 2020 & 2021

2. CADS RC/RebarCAD Extended Features



The CADS RC/RebarCAD Extended Features are available as a separate feature that include the following extended features for RebarCAD India:

- ▶ Soule File Output (.XML);
- ▶ aSa File Output (.RDX);
- ▶ Excel Export.

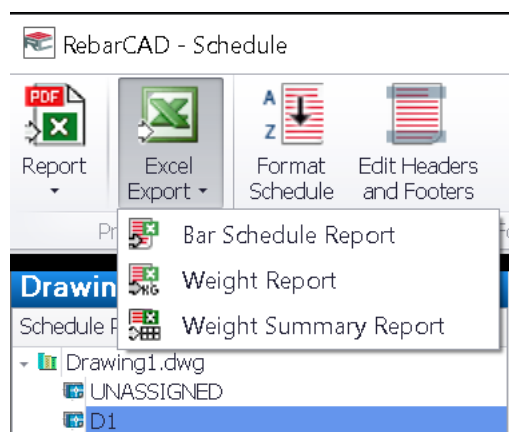
3. Excel Export

A new feature to export data to an Excel worksheet with custom formatting is supported. The user can create and use their own custom template for this data export.

The Print Panel has been amended.

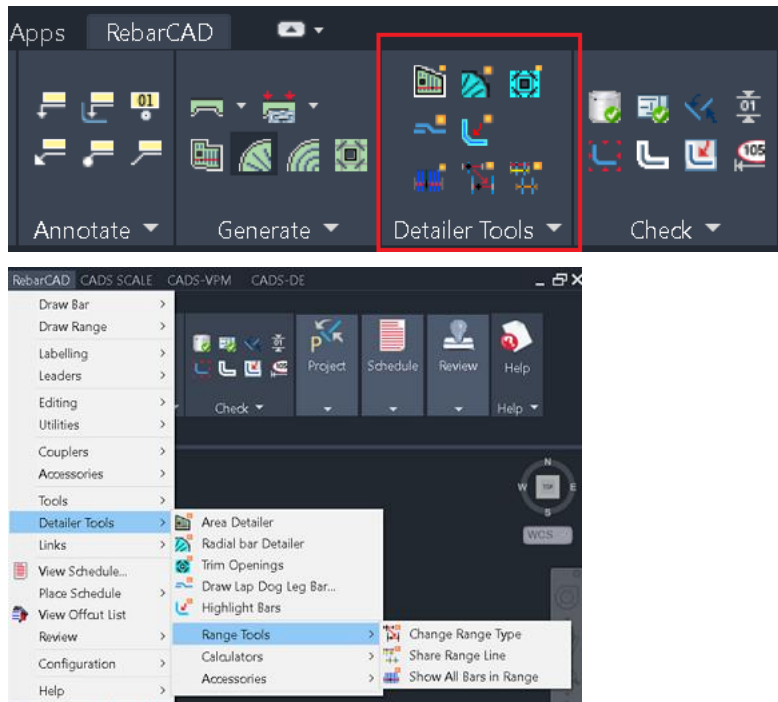
- ▶ The Report button uses the configured REPX report to generate the selected Report Preview;
- ▶ The Excel Export Button uses the configured Excel Template to generate the selected report.

Two different report formats can be configured in the Schedule for the Schedule Report, Weight Report and the Weight Summary Report, one in the form of REPX and the other in the form of an Excel template.



Refer to the document, “Excel Template Creation for RebarCAD India User Manual.pdf” in the ‘CADS-RC\Manuals’ folder for more details on this feature.

4. New generation macros



A new set of productivity tools have been introduced with more improvements, these will replace the following existing productivity tools in future versions. However, this version will have both the sets of tools in parallel.

- ▶ Area Detailer;
- ▶ Radial Bar Detailer;
- ▶ Trim Openings;
- ▶ Draw Lap Dog Leg Bar;
- ▶ Highlight Bars;
- ▶ Change Range Type;
- ▶ Share Range Line;
- ▶ Show All Bars in Range;
- ▶ Steel Quantity Calculator;
- ▶ Mesh Calculator;
- ▶ Add Standee/Chair.

5. RC LISP API improvements

The "CADS_RCL_ENTGET" LISP API is enhanced to include the following new fields:

- ▶ Bar set number;
- ▶ Release description;
- ▶ Length;
- ▶ First bar length;
- ▶ Last bar length;

The following new RC LISP API functions are introduced:

- ▶ `CADS_RCL_GET_CUR_DET_STD` - Gets the current detailing standard used in the drawing;
- ▶ `CADS_RCL_GET_CUR_DET_STD_FILE` - Gets the current detailing standard used in the drawing with the filename and the location;

`CADS_RCL_CHANGE_DET_STD` - Changes the current detailing standard set in a drawing to a different one.

6. SMART Slab Detailer improvements

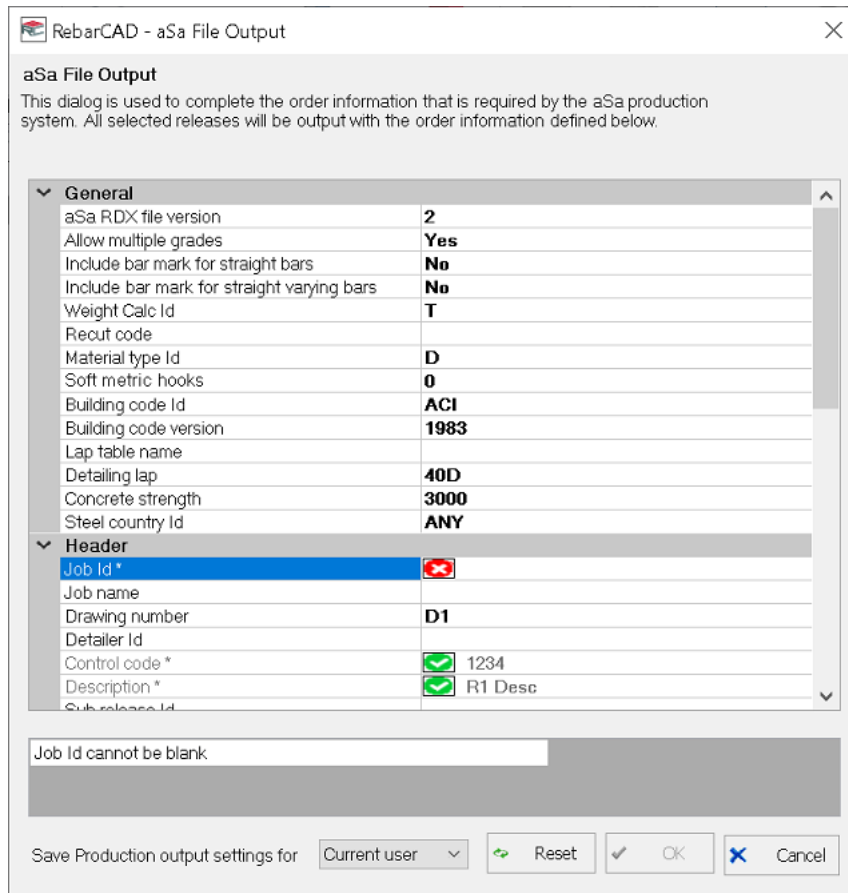
The SMART Slab Detailer has been enhanced to support importing V1.0 & V3.0 .asf files.

A sample .asf file created in V3.0 is available in the “Smart Modeller Slab Detailer 2021.0\Examples” folder.

7. Coupler improvements

The Lenton coupler data is updated to include the end preparation details required for the aSa file output (.CAD) and aSa file output (.RDX) production systems.

8. aSa file output (.RDX)



The dialog has been enhanced with the following features:

- ▶ The fields in the dialog are rearranged and segregated based on the purpose of the fields;
- ▶ Whenever a single release is selected for ordering, then the unique order number entered in the “Order Material” dialog will be set as the “Control code”. The “Control code” cannot be edited in these circumstances;
- ▶ Mandatory fields are highlighted to look more prominent;
- ▶ The value for the “Description” field is set as the release description of the appropriate release and cannot be edited;
- ▶ Reset option introduced to reset the values in the fields to their default settings;
- ▶ The default value for the Steel country ID is set as ANY;
- ▶ The following new fields are supported:
 - Drop down list for “Bid Item ID”;
 - Drop down list for “Excuse Code ID”;
 - Drop down list for “Placing Code ID”;
 - Auto mark;
 - Alpha character.

The output has been enhanced for the following:

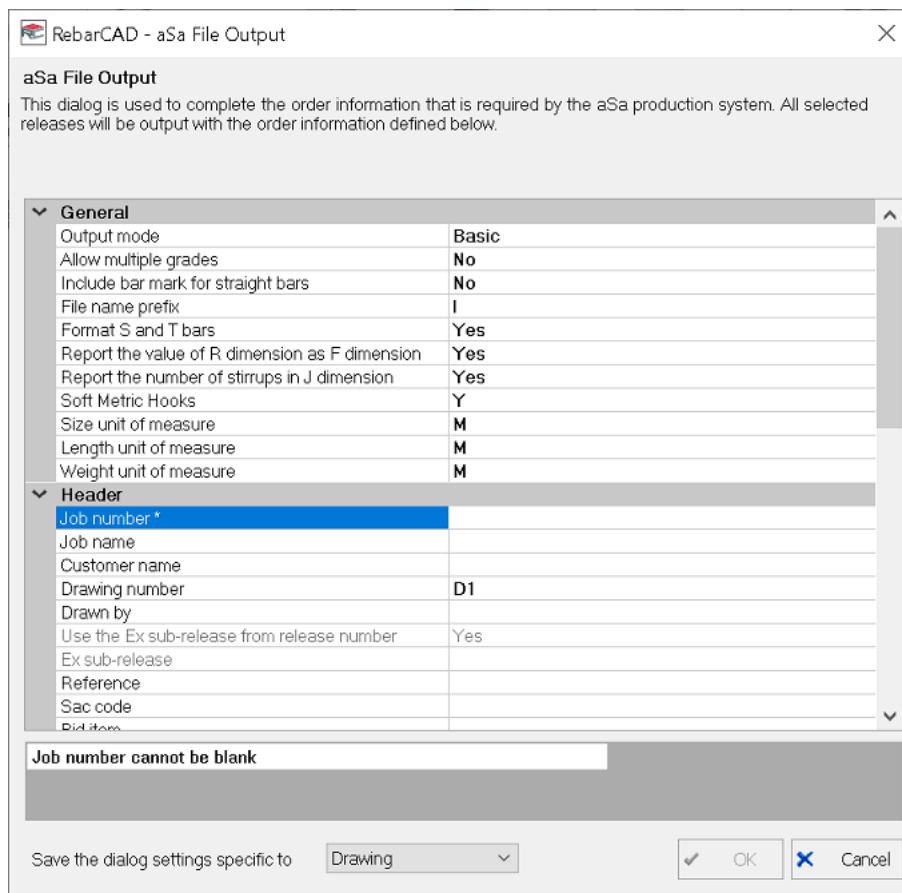
- ▶ Header data for multiple release;
- ▶ End preparation data;
- ▶ Bending dimension data;
- ▶ Straight vary bar data;
- ▶ Segregation of the bar items based on the shape category;
- ▶ Combining of the bar items for similar bar data;
- ▶ Sorting based on shape code, bar size, bar length and end preparation data;

The configuration file has been enhanced to control the following:

- ▶ Visibility of the fields;
- ▶ Read only status of the fields;
- ▶ Non optional fields;
- ▶ Ignore retaining user values for the fields.

A defect in which the values of cutting precision and bending precision values set in the previous session is not retained has been fixed.

9. aSa file output (.CAD)



RebarCAD - aSa File Output

aSa File Output
 This dialog is used to complete the order information that is required by the aSa production system. All selected releases will be output with the order information defined below.

General	
Output mode	Basic
Allow multiple grades	No
Include bar mark for straight bars	No
File name prefix	I
Format S and T bars	Yes
Report the value of R dimension as F dimension	Yes
Report the number of stirrups in J dimension	Yes
Soft Metric Hooks	Y
Size unit of measure	M
Length unit of measure	M
Weight unit of measure	M

Header	
Job number *	
Job name	
Customer name	
Drawing number	D1
Drawn by	
Use the Ex sub-release from release number	Yes
Ex sub-release	
Reference	
Sac code	
Picture	

Job number cannot be blank

Save the dialog settings specific to: Drawing

OK Cancel

The dialog has been enhanced to support the following new fields:

- ▶ Soft Metric Hooks;
- ▶ Size unit of measure;
- ▶ Length unit of measure;
- ▶ Weight unit of measure;
- ▶ Use the Ex sub-release from the release number;
- ▶ Ex sub-release.

The output has been enhanced for the following:

- ▶ Multiple grade support;
- ▶ End preparation data in Basic output mode;
- ▶ End preparation data in Extended output mode.

The configuration file has been enhanced to control the following:

- ▶ Visibility of the fields.

A defect in which the output was generated with a blank job number at a specific sequence has been fixed.

A defect in which the output was not generated at a specific sequence has been fixed.

10. Soule file output (.XML)

A defect in which the node coating was blank with epoxy coated bar has been fixed.

11. SteelPAC output (.SDI)

A defect in which the output was not generated at a specific sequence has been fixed.

A defect in which striked out tapered bars were not reported at a specific sequence has been fixed.

12. CADS Viewport Manager improvements

A new global configuration, "IGNORESCALINGFORNONRCTEXT" has been introduced to handle separate scale settings for non-RC Text entities.

The following new VPM LISP API functions are introduced:

- ▶ CADS_VPML_GETCFG - Gets the global configuration value from the CADS Viewport Manager;
- ▶ CADS_VPML_SETCFG - Sets the global configuration value to the CADS Viewport Manager.
- ▶ Defect fixes

A defect in which the coupler label was incorrect at a specific sequence has been fixed.

A defect in which the drawing sheets were created accidentally configuring the anonymous blocks at a specific sequence has been fixed.

A defect in which the schedule was not shown at a specific sequence has been fixed.

A defect in which reset all viewports was not working at a specific sequence has been fixed.

A defect in which multiple edit was changing the bar mark of similar bars at a specific sequence has been fixed.

A defect in which the start L bar was drawn more than the stock length at a specific sequence has been fixed.

A defect in which the label was not placed for the copied Over Stock Length (OSL) bar at a specific sequence has been fixed.

A defect in which the range centre value was incorrect for Over Stock Length OSL bar at a specific sequence has been fixed.

A defect in which the decimal values were not accepted for the bar offset value in the Over Stock Length OSL configuration dialog has been fixed.

Version 2020.0

1. AutoCAD Support

RebarCAD India 2020.0 supports the following Autodesk platforms:

AutoCAD Vertical	Supported Versions
AutoCAD	2018, 2019 & 2020
AutoCAD Architecture	2018, 2019 & 2020

2. Licensing

Cloud licencing is enhanced to support the proxy server and the DMZ Network relay server.

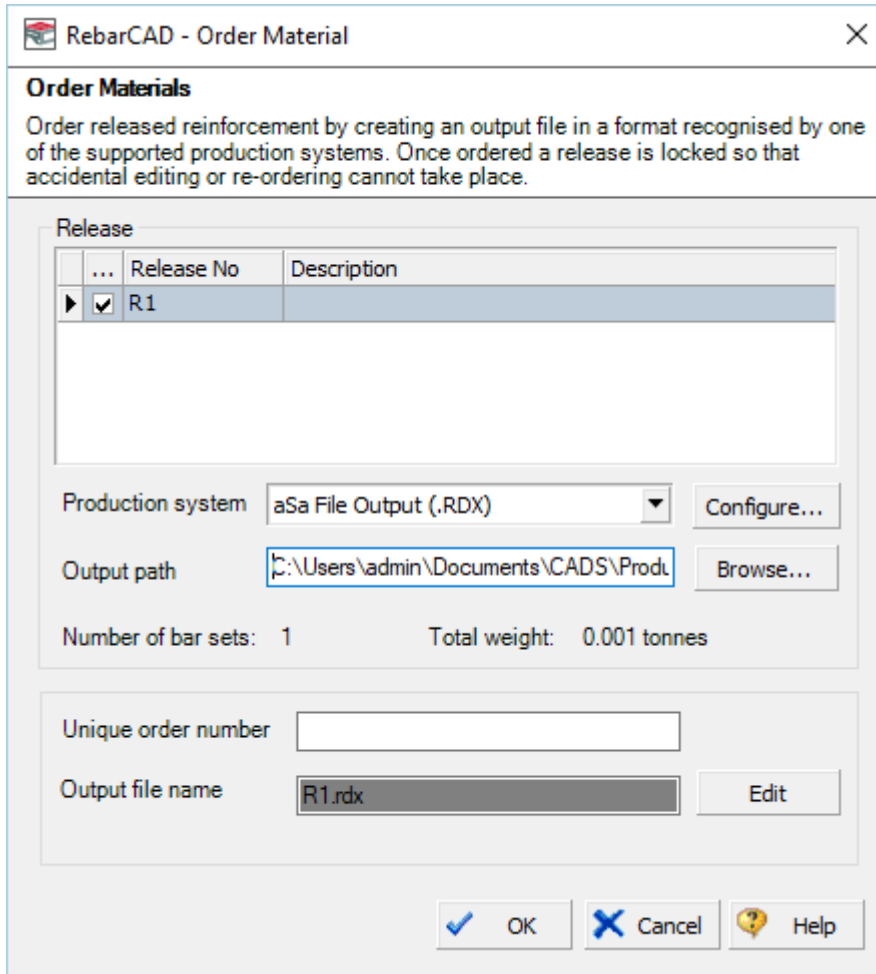
3. The tool tip is enhanced to display the weight of the bar.

4. The "CADS_RCL_ENTGET" LISP API is enhanced to include the following new fields:

- ▶ Total Bar Length;
- ▶ Member title;
- ▶ Release number;
- ▶ Drawing sheet number;
- ▶ Multiplier;
- ▶ Hidden multiplier;
- ▶ Member quantity.

5. aSa file output (.RDX)

The aSa production system now supports a new .RDX file format.



RebarCAD - Order Material

Order Materials
 Order released reinforcement by creating an output file in a format recognised by one of the supported production systems. Once ordered a release is locked so that accidental editing or re-ordering cannot take place.

...	Release No	Description
<input checked="" type="checkbox"/>	R1	

Production system: aSa File Output (.RDX) Configure...

Output path: C:\Users\admin\Documents\CADS\Produ Browse...

Number of bar sets: 1 Total weight: 0.001 tonnes

Unique order number:

Output file name: R1.rdx Edit

6. Defect fixes

A defect in which anonymous blocks configured as the title block by mistake prompting for drawing sheet number has been fixed.

A few defects related to the aSa production system have been fixed.

A few defects related to the bar shape diagrams have been fixed.

Version 2019.0

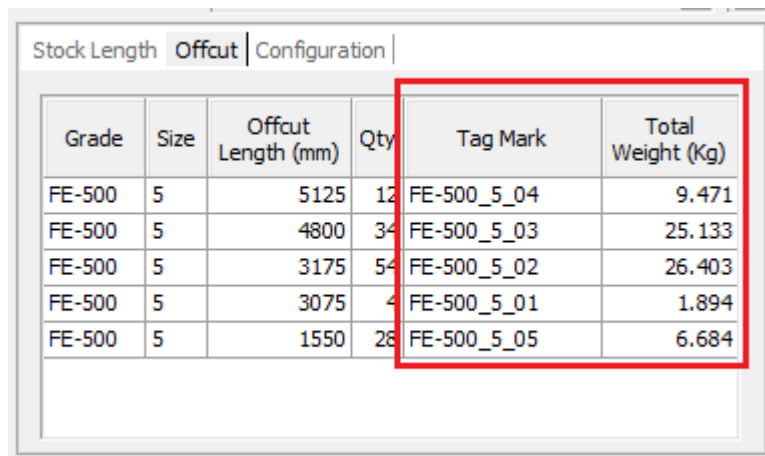
1. AutoCAD Support

RebarCAD India 2019.0 supports the following Autodesk platforms:

AutoCAD Vertical	Supported Versions
AutoCAD	2017, 2018 & 2019
AutoCAD Architecture	2017, 2018 & 2019

2. Tag mark and total weight for offcut bars in Stock Bar Optimiser

The Stock Bar Optimiser tool is enhanced to include the tag mark and the total weight for offcut bars. This will help in the effective stock management of the offcut bars. Segregating and picking the required offcut bars becomes easier with the tag marks.

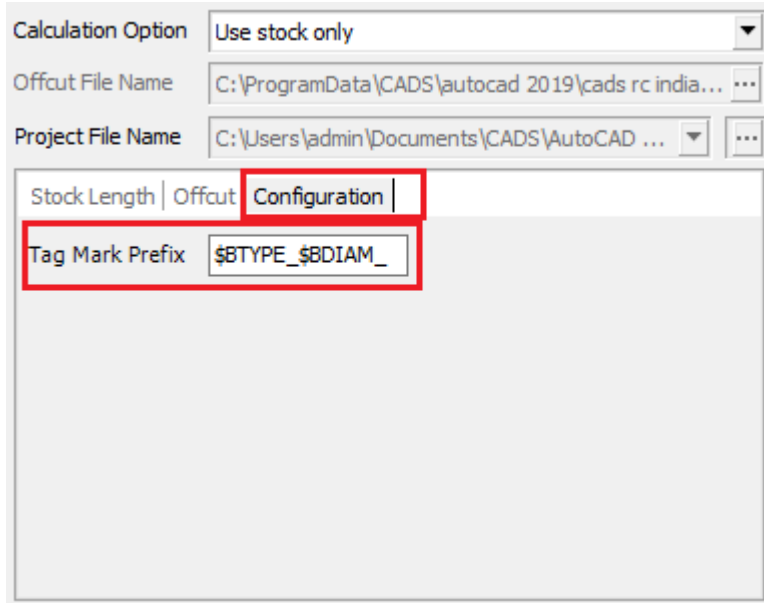


Grade	Size	Offcut Length (mm)	Qty	Tag Mark	Total Weight (Kg)
FE-500	5	5125	12	FE-500_5_04	9.471
FE-500	5	4800	34	FE-500_5_03	25.133
FE-500	5	3175	54	FE-500_5_02	26.403
FE-500	5	3075	4	FE-500_5_01	1.894
FE-500	5	1550	28	FE-500_5_05	6.684

A new tab for Configuration is added. The tag mark prefix format can be configured in the 'Tag mark Prefix' field. The bar grade and bar size can be configured as a tag mark prefix by setting the appropriate keywords.

\$BTYPE – keyword for bar grade

\$BDIAM – keyword for bar size



Calculation Option: Use stock only

Offcut File Name: C:\ProgramData\CADS\autocad 2019\cads rc india...

Project File Name: C:\Users\admin\Documents\CADS\AutoCAD ...

Stock Length | Offcut | **Configuration**

Tag Mark Prefix: \$BTYPE_ \$BDIAM_

3. Defect fixes

A defect in customising the REPX weight summary report, at a specific sequence has been fixed.

A defect in the multiple pitch range, in which the spacing becomes zero, at a particular sequence has been fixed.

A defect, in which an invisible attribute for a drawing sheet number was added automatically to bars, at a particular sequence has been fixed.

A defect in the 'Order Material' dialog, in which the number of bar sets was incorrect at a particular sequence has been fixed.

A defect in the aSa production system, in which the proper warning message was not displayed, on selecting multiple grades, has been fixed.

A defect in the Soule production system has been fixed.

A defect in the 'Radial Bar Detailer' macro, in the default design spacing has been fixed.

A few defects in the Stock Bar Optimiser tool has been fixed.

Version 2018.1

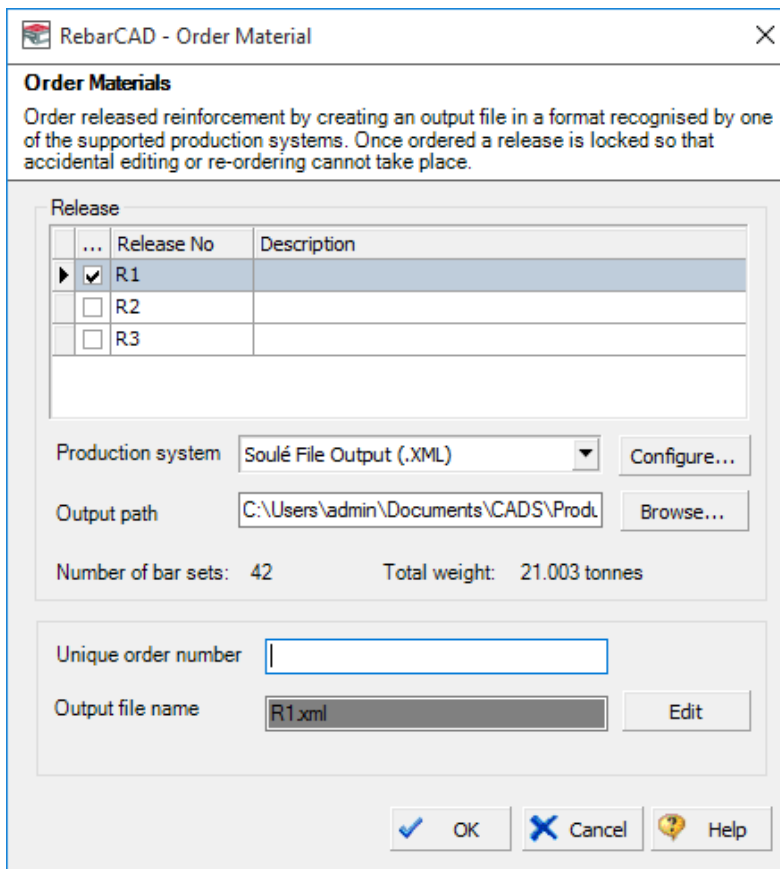
1. AutoCAD Support

RebarCAD India 2018.1 supports the following Autodesk platforms:

AutoCAD Vertical	Supported Versions
AutoCAD	2016, 2017 & 2018
AutoCAD Architecture	2016, 2017 & 2018

2. Soule file output (.xml)

The Soule production system now supports a new .xml file format.



Order Materials

Order released reinforcement by creating an output file in a format recognised by one of the supported production systems. Once ordered a release is locked so that accidental editing or re-ordering cannot take place.

...	Release No	Description
<input checked="" type="checkbox"/>	R1	
<input type="checkbox"/>	R2	
<input type="checkbox"/>	R3	

Production system: Soulé File Output (.XML) Configure...

Output path: C:\Users\admin\Documents\CADS\Prod. Browse...

Number of bar sets: 42 Total weight: 21.003 tonnes

Unique order number:

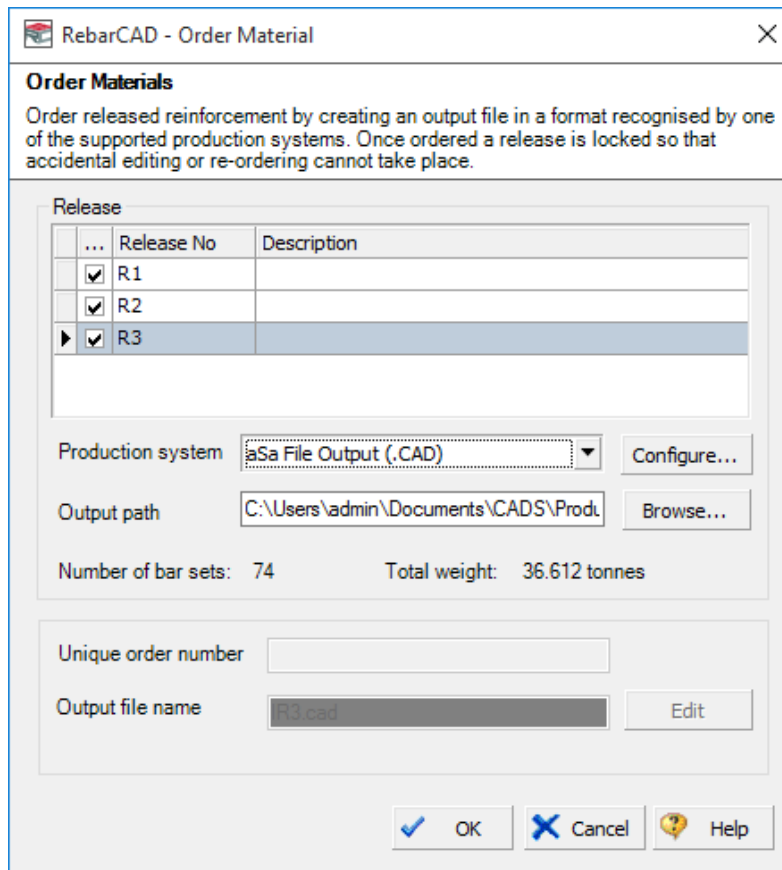
Output file name: R1.xml Edit

OK Cancel Help

3. aSa file output

The aSa production system has been enhanced to support ordering of multiple releases at a time. Once multiple releases are selected for ordering then,

- ▶ Separate output files will be generated for each of the selected releases;
- ▶ The user will not be allowed to set the unique order number and the output filename will be set the same as that of the release number;
- ▶ The header information will be set the same for all the output files.



4. Stock Bar Optimiser improvements

Various improvements in the Stock Bar Optimizer, which includes the following:

- ▶ Support for multiple stock length;
- ▶ Support for multiple drawings;
- ▶ Support for rebar management.

RebarCAD - Stock Bar Optimiser

Information And Usage
 This dialog helps you optimise your stock bars and offcuts available in your fabrication yard. This dialog can read your offcut file and stock bar input to optimise reinforcement steel which needs to be fabricated. You can iterate with different options and once satisfied, produce a graphical cutting schedule.

Calculation Option: Use stock only

Offcut File Name: C:\ProgramData\CADS\autocad 2018\cads rc india...

Project File Name: C:\Users\admin\Documents\CADS\AutoCAD 201

Stock Length | Offcut | Drawings

Drawing File ID	Drawing File Name	Drawing File Location
D01	D001.dwg	C:\Proj001\
D02	D002.dwg	C:\Proj001\
D03	D003.dwg	C:\Proj001\
D04	D004.dwg	C:\Proj001\

Filter

By project | By release

	File Name	Release
<input type="checkbox"/>	D004.dwg	R1
<input checked="" type="checkbox"/>	D003.dwg	R3
<input type="checkbox"/>	D003.dwg	R2
<input checked="" type="checkbox"/>	D003.dwg	R1
<input checked="" type="checkbox"/>	D002.dwg	R3
<input type="checkbox"/>	D002.dwg	R2
<input type="checkbox"/>	D002.dwg	R1
<input checked="" type="checkbox"/>	D001.dwg	R3
<input type="checkbox"/>	D001.dwg	R2
<input type="checkbox"/>	D001.dwg	R1

Export Drawing Data | Calculate | Update Offcut To File

Overall Efficiency (%)	Steel Utilised (Tonnes)	Steel To be Procured (Tonnes)	Scrap (%)	Scrap (Tonnes)	Offcut (%)	Offcut (Tonnes)	Offcut Utilised (%)	Offcut Utilised (Tonnes)	Offcut Unutilised (Tonnes)
92.839	285.450	339.637	1.171	1.139	5.990	53.048	0.000	0.000	0.000

Output

File Location: C:\Users\admin\Documents | File Name: D004 | CSV (Comm...) | Export

Close

Support for multiple stock length

The user is now allowed to add multiple stock length values for a particular bar grade and size.

Support for multiple drawings

The user is now allowed to choose the calculation option between “By current drawing” and “By project”. If the “By project” option is selected then the user is allowed to export the bar data of each of the individual drawings in the project to a project file (.sbo), located at a centralised location, by using the “Export Drawing Data” button. Once the bar data of all the required drawings in the project are exported to the project file, and the required filter options are chosen, the “Calculate” button will be enabled.

Support for rebar management

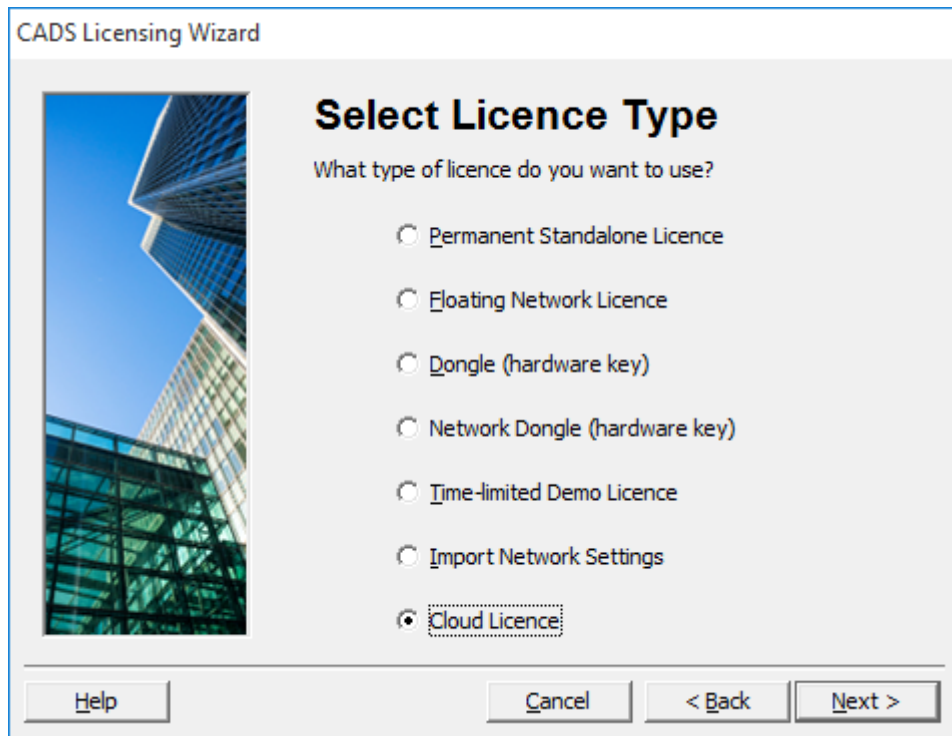
More reporting fields are included to enhance the rebar management. The new fields include the following:

- ▶ Steel Utilised (Tonnes) ;
- ▶ Steel To Be Procured (Tonnes);
- ▶ Scrap (Tonnes);
- ▶ Offcut (Tonnes);
- ▶ Offcut Utilised (Tonnes);
- ▶ Offcut Unutilised (Tonnes).

The .CSV file format of the report also includes these new fields.

5. Licensing

Licensing is enhanced to support cloud licensing.



6. Defect fixes

A defect in the grid tool, in which the extension lines were missing, has been fixed.

A defect, in which there was a mismatch in the weight per bar in the schedule on drawing at a specific sequence, has been fixed.

A defect in adding labels to over stock bars at a specific sequence has been fixed.

A defect, in which the electronic schedule data was not generated at a specific sequence when the drawing file was saved, has been fixed.

Version 2018.0

1. AutoCAD Support

RebarCAD India 2018.0 supports the following Autodesk platforms:

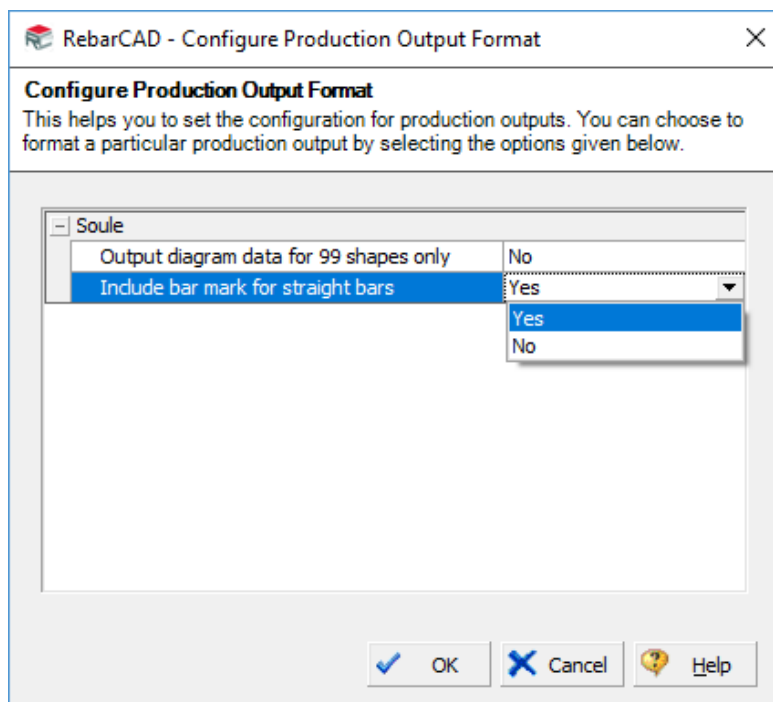
AutoCAD Vertical	Supported Versions
AutoCAD	2016, 2017 & 2018
AutoCAD Architecture	2016, 2017 & 2018

2. Order materials

The 'Order Materials' dialog is enhanced to allow the user to create a new folder for production output.

3. Soule file output

The Soule file output now includes bar marks for straight bars, based on the configuration. If the configuration, "Include bar mark for straight bars" is set to 'Yes', then the bar mark will be output for the straight bars and if it is set to 'No', then the bar mark will not be output.



4. Defect fixes

A defect in which the dimension lines were not added in the stair outlines has been fixed.

A defect when the release colour set to certain colours was not set appropriately for bar labels has been fixed.

A defect in the Check database command at a specific sequence has been fixed.

A defect in which the weight summary table was not marked with an invalid flag at a particular sequence has been fixed.

The end adjustment value for DEXTRA BTSTD Type C positional coupler is now updated to match the latest DEXTRA ROLLTEC product datasheet.

Version 2017.10

1. Coupler improvements

The DEXTRA ROLLTEC coupler data is updated to match the latest DEXTRA ROLLTEC product data sheet.

2. Coupler dialog enhancement

The 'Add/Edit coupler' dialog has been enhanced so that when a manufacturer's name is set, the check box to 'Attach Label' is checked by default, when the global configuration 'AUTOATTACHLABEL' is set to 'YES' in the 'COUPLERCONFIG'. This allows the user to automatically attach the coupler labels to the bars when the coupler/thread symbols are attached to it.

3. Defect fixes

A defect where the blank line inserted to the first line of the schedule was not displayed in the schedule on drawing in a particular sequence has been fixed.

A defect where the issue and revision configuration settings configured in the drawings created in the older version were lost on opening the drawing in the latest version, has been fixed.

A defect in the project match bar tool, where the bar marks were generated ignoring the prefix in a particular sequence has been fixed.

A defect where the existence of a blank AutoCAD layer in the RebarCAD drawing caused the loss of the schedule configuration settings, has been fixed.

A defect where an error occurred when placing the schedule on the drawing in a particular sequence, has been fixed.

Version 2017

1. AutoCAD Support

RebarCAD India supports the following Autodesk platforms:

AutoCAD Vertical	Supported Versions
AutoCAD	2015, 2016 & 2017
AutoCAD Architecture	2015, 2016 & 2017

2. Save as V9.08 Drawing...

The new 'Save as V9.08 Drawing...' allows you to save back the drawings created in RebarCAD 2017 and higher versions in V9.08 format.

This command can be accessed in one of the following ways:

- Using the 'Save as V9.08 Drawing...' menu in RebarCAD ->Utilities pop-up menu.
- Using the command "CADS_RC_SAVE_AS_V908" from the command prompt.

The drawing will be saved back automatically in the AutoCAD file format compatible with V9.08.

The default filename will be appended with V908, so that you do not accidentally save your active drawing while saving back to an older version.

3. Save as V9.04 Drawing...

Since the RebarCAD V9.04 through V9.07 shares the same RebarCAD data structure, the existing command 'Save as V9.07 Drawing...' is now renamed as 'Save as V9.04 Drawing...' to be more appropriate.

The drawing will be saved back automatically in the AutoCAD file format compatible with V9.04.

The command is also improved to append the default filename with V904, so that you do not accidentally save your active drawing while saving back to an older version.

4. Material Type

In all the coupler related dialogs, the caption 'Grade' is changed to 'Material Type' as they refer to the material type of the coupler.

5. Additional coupler symbols

Two new coupler symbols for form saver coupler and positional coupler are added to the existing coupler symbols list.

6. Defect fixes

A defect specific to AutoCAD 2016, in which a warning message was displayed, on loading RebarCAD after opening the drawing is fixed.

A defect specific to AutoCAD 2016, in which the erase bar set warning message was displayed, on erasing AutoCAD entities is fixed.

Version 2016.1

1. Project Match Bars

The new 'Project Match Bars' tool allows you to match the bar marks of identical shape code and dimensions across drawing files within a project.

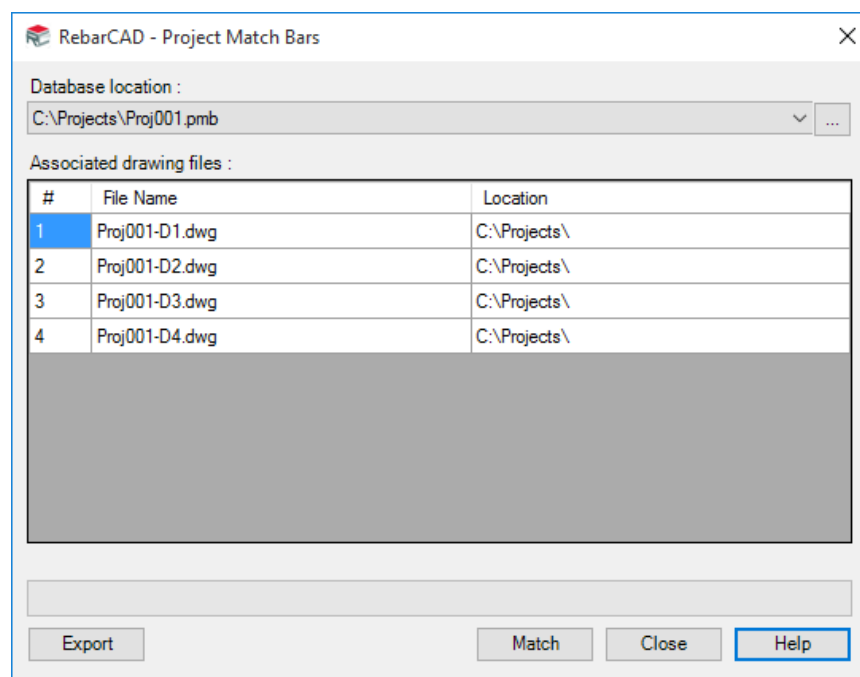
This tool can be accessed in one of the following ways:

- The 'Project Match Bars' menu in RebarCAD->Utilities pop-up menu.
- The 'Project Match Bars' tool in the 'RebarCAD' toolbar.
- The 'Project Match Bars' ribbon item in the 'Project' panel.



- "CADS_RC_PMB" command in the command prompt.

The Project Match Bars dialog will be displayed as shown in the image below:



Please refer to the help document for more details by clicking on the 'Help' button.

2. Object snap settings

The Object Snap settings issue has been fixed, in which the settings were sporadically lost.

3. Schedule improvements

The schedule format settings are now retained after inserting manual page breaks and after moving the schedule lines in the schedule.

It is now possible to insert a line (text line/blank line) above or below the selected schedule line in the schedule.

4. Reports and schedule on drawing improvements

Many improvements have been made in the reports.

A defect has been fixed in which the incorrect total weight of tapered ranges was reported (this happened when it was configured to display only the first and last bar of the tapered bars). This has been fixed in both the printed reports and in the schedule on drawing.

5. Issue and revision configurations

The issue and revision feature is enhanced with new configurations to configure the revision cloud layer, revision callout layer, revision table layer, revision cloud start width and revision cloud end width. You can now configure revision cloud and callout layers for each issue type.

6. Select bars

More filters are added to the 'Select Bars...' feature, which allows you to select the bars based on their type and size, bar mark prefix and drawing sheet.

7. Highlight bars

More filters are added to the 'Highlight Bars...' feature, which allows you to select the bars based on their type and size, bar mark prefix and drawing sheet.

8. Bar assignments

The features to assign bars to release, member, drawing sheet, bid item and bid structure are enhanced such that the bar labels are also highlighted in addition to the bar views, for easy identification of selected bar views and labels.

The 'New Set' and 'Range New Set' commands now allow you to pick the current bar assignments such as members, releases, drawing sheets, bid items and bid structures.

You can now apply release colour to bar labels either on release assignment or based on the order state of the associated release. Your preference can be configured in the 'Release and Ordering' configuration page.

9. Range improvements

Range texts are now made configurable for alternate ranges. The start mark, end mark and the total number of bars of the alternate ranges can also be configured as the range text for alternate ranges.

A defect has been fixed in which stretching ranges drawn with overstock length bars produced unexpected results.

The Check database command has been enhanced to detect and report any corrupted tapered ranges or ranges whose lengths are less than that of the c/c value.

10. Coupler improvements

The Coupler dialog has been reinstated to display the coupler details of both ends on a single screen.

When couplers are added to a bar view, any other bar views of the set automatically receive a coupler without the number of couplers changing in the Accessories List.

A defect has been fixed in which the coupler quantity was not considering the member quantity.

11. Production output improvements

The Order Materials feature now allows you to modify the desired production system in the Order Materials dialog itself.

A defect has been fixed that affected ordering when the production output system is Excel Format.

12. User interface improvements

The quick access toolbar in the RebarCAD workspace has been modified such that the 'Toggle Automatic Loading' command is moved to the right end to avoid accidental selection.

13. Defect fixes

A defect has been fixed in which the database was corrupted when adding extra label notes with special characters.

A defect has been fixed in which moving the labels drawn with label sketches moved the label sketches a little away from the label text.

A defect has been fixed in which 'cancelling title block configuration' dialog popped up a warning message when no title blocks were configured.

A defect has been fixed in which the bar references added by selecting the bar label view were also duplicated while duplicating the bar view alone.

Version 2016

1. AutoCAD Support

RebarCAD 2016 supports the following Autodesk platforms:

AutoCAD Vertical	Supported Versions
AutoCAD	2014, 2015 & 2016
AutoCAD Architecture	2014, 2015 & 2016

- Administrative privileges are no longer required when launching the software.
- Shape Sketches will get updated automatically if the master copy is modified.
- An issue related to the changing of the default layer to the schedule layer after auto-save, has been fixed.

Version 2015.1

- RebarCAD 2015.1 can now be installed in parallel with previous versions of RebarCAD.
- Linear tapered ranges now support the "Adjust Ends" option.
- The range text orientation has been corrected to follow the text reading standards while detailing ranges vertically.
- A defect has been fixed in which the "Schedule on drawing" failed to sort correctly in a specific sequence.

5. A new option has been added to specify a tolerance value for bent bar leg dimensions when matching bar marks.
6. A new option has been added to specify a scale factor for the schedule on drawing.
7. A new option has been added to configure restricted bar sizes and to identify the instances of such bars present in the drawing file through the “Drawing Audit” command.
8. The “Override Revision Mark” command has been enhanced to display all the revision marks available in the drawing file.
9. A defect has been fixed in which the schedule failed to update when the “Rounding configuration setting” was changed.
10. A new option has been added to specify the rotation angle while placing bar references.
11. A defect has been fixed in the “Set to View” command, which failed to remove extra notes attached to the label.
12. A defect has been fixed in which the schedule on drawing was not marked “INVALID” in a specific sequence.
13. A defect has been fixed in the Group Layering Option (GLO), which modified the c/c values of ranges in a specific sequence.
14. A bar references defect has been fixed, which scaled improperly while placing as blocks.
15. A defect has been fixed in the “Stretch” command, which incorrectly changed the bar marks in a specific sequence.
16. A defect has been fixed in which the “Ranges” created using the “Split Range” tool lost their bar information when duplicated.
17. A defect has been fixed in the Pinnacle production output file and in the Harris production output file which exported deleted bar information in a specific sequence.
18. A defect has been fixed in the Over Stock Length (OSL) feature to update the minimum dimensions based on the configured “Dimension Minimums”.
19. A defect has been fixed in the “Add/Edit coupler” command, which failed to retain the coupler information in a specific sequence.
20. A defect has been fixed in which coupler symbols were lost while pasting or mirroring bars with couplers as a “View”.
21. A defect has been fixed in which the Accessories list failed to update when bars with couplers were duplicated as a “Set”.
22. A defect has been fixed in the “Uncombined bars” command, which reported an error in a specific sequence.
23. A defect has been fixed in which Automatic Dimensioned Leaders (ADL) were drawn incorrectly in a specific sequence.
24. A defect has been fixed that placed the schedule on drawing in an incorrect table format, specific to AutoCAD 2015.
25. A defect has been fixed in which leaders were drawn incorrectly when the leader mode was set to “Centre”.
26. A defect has been fixed in the “Save As v8.4x” command, which caused the application to crash in a specific sequence.

27. A defect has been fixed in the “Run to Path” command, which placed the bars incorrectly in a specific sequence.
28. A defect has been fixed to show the correct view of the bars while importing jobs through the beam link option.
29. A defect has been fixed in the “Cut Stock Bar Optimiser” to show the correct quantity of utilised stock bars in the offcut file.
30. A defect has been fixed in CADS DE, which caused the application to crash in a specific sequence.
31. A defect has been fixed in which the stair flight detailer reported an error message in the command prompt.

Version 2015

1. Support for AutoCAD 2015.
2. Default OSNAP option has now been reverted to use “Near” while placing a label, instead of the default value.
3. New feature to reset Member, Release and a few other dialogs to its default position has been introduced.
4. New option added to the “Match bars” feature to suppress or display the default prompts.
5. Option added to show or hide the first issue revision mark in the schedule and drawing reports.
6. Fixed a defect in which incorrect values were displayed for the “page number” and “total page” fields in a specific sequence.
7. Fixed a defect that took considerable time in a specific sequence to place a schedule in the drawing.
8. Fixed a defect in which the “Edit Range” dialog displayed duplicated dimensions for tapered ranges in a specific sequence.
9. Fixed a defect which showed a “discrepancy error” when more than 60 characters were entered in the bar label notes.
10. Fixed the crash which occurred while using the “Place shape schedule” feature.
11. Fixed a defect which updated all bar sets of the same bar mark when one of its bars was stretched.
12. Fixed a defect which adopted the label direction of a previously drawn taper range.
13. Fixed a defect which did not update the schedule revision mark while editing the bars that were combined in the schedule.
14. Fixed a few defects in the Radial Bar Detailer that prevented a change of type and did not show a few shapes correctly.
15. Improvements made to the “Assign bars to release” feature which earlier displayed only the used types in a drawing instead of entire configured types.

Version 9.12 Service Pack (Build 1819)

1. Fix to a Check Database error, which corrupted the drawing data when a drawing sheet was deleted in a specific sequence.
2. Fix to the Check Database command to include an additional check for the bar set line number.
3. Fix to the range text annotation in fixed pitch and staggered fixed pitch ranges which reported an incorrect number of bars in a specific sequence.

Version 9.12

1. Support for AutoCAD 2014, AutoCAD Architecture 2014, AutoCAD Civil 3D 2014, AutoCAD Map 3D 2014, AutoCAD Mechanical 2014, AutoCAD MEP 2014 and AutoCAD Structural Detailing 2014.
2. Enhancement to the Coupler dialog.
3. New feature to assign symbols to different types and makes of Couplers and Threads.
4. New feature allows multiple editing of Bars with Coupler.
5. New feature to apply Coupler Grades.
6. Option to identify Unavailable Couplers present in the drawing.
7. Fix to the Coupler feature to support the copy and mirror operation on Bar View with Coupler.
8. Fix to the Accessories list which failed to update the Coupler quantity in specific sequences.
9. Enhancement to the Match bars command to match a bar based on the Drawing Sheet, Release or Member.
10. Enhancement to the Compact bars command to compact a bar based on the Drawing Sheet, Release or Member and to specify the starting Bar Mark number.
11. New feature to configure Stock Lengths for each Bar Size.
12. New feature to configure additional Tick types in the Tick and Tag Feature.
13. Enhancement to the Drawing Audit command to identify the Bars detailed with length greater than the stock length.
14. New feature to configure the Bar Reference to include a Block or Dimensioned Shape sketch.
15. New feature to group revision clouds.
16. New feature to configure the Range Annotation format and position.
17. Option to configure the Range Length for Range Annotation.
18. New feature to include dimensioned sketches in the Schedule on Drawing and printed reports.
19. New command CADS_RC_TRC introduced to identify corrupted tapered ranges in a drawing.
20. New feature to report Unlabelled bars as Incomplete while generating Production Output Files, placing the Bar Schedule on Drawing and generating printed Reports.
21. New feature to place curtail length for Tapered Ranges.
22. Option to support Calibri font type in the shape diagram configuration.

23. Enhancement to the GLO feature to support the Area detailer, Change range, Split range and Circular Bar Detailer.
24. Support for Lenton Lock Coupler.
25. Enhancement to custom sorting for Member and Release to default from drawing.
26. Option to display the coupler type in Dimensioned sketches using custom block files.
27. Option to print the Coupler Report from the Bar Schedule using the customised report file.
28. Option to configure the drawing of Unscheduled Bars in a separate layer.
29. Option to configure the Bar Leader Line offset from the Bar Label.
30. Option to exclude Bar Mark for labelling Unscheduled Bars.
31. Option to view the bar Set Number in Free Form Bar Schedule view.
32. Fix to allow the display of alternating solid and hollow bars for Alternate Range Bar Runs.
33. New feature to display both the Net length and Gross length of bars in the Bar Schedule using the customised BDF file.
34. New feature to display bar ends as 'doughnuts' or 'cross' based on the projecting bar view when using the customised BDF file.
35. Fix to the Split Range Tool which failed to execute in specific sequences.
36. Fix to the pile cap detailer tool to round off spacing as per rounding configuration.
37. Fix to the Schedule Revision Mark which failed to update in a specific sequence.
38. Fix to the VPM viewports to avoid multiple warning messages for overlapped viewports.
39. Fix to the Bar in Section which failed to draw as per configuration in a specific sequence.
40. Fix to the Weight Report and Weight Summary Report to display correct user field values.
41. Fix to the Change Set to View command to remove Extra Notes.
42. Fix to the Bar Schedule on drawing feature to display straight bar leg dimension as per the Bar Schedule Configuration.
43. Fix to the Check RC Database command for invalid date error warning.
44. Fix to the Check RC Database command to improve performance in a specific sequence.
45. Fix to the Drawing Issue feature to improve performance with the Lock issued line configuration option.
46. Fix to the Run to path command which detailed incorrectly in a specific sequence.
47. Fix to the RC Beam Designer Link to detail the Bar Leader line in the correct position.
48. Fix to the Change Range Type for an incorrect range drawing in a specific sequence.
49. Fix to CADs_RC_REDRAW to correct bar orientation in a specific sequence.
50. Fix to the Bar Schedule - Localisation configuration setting to restrict '0' precision when Length is configured to show in Metres.
51. Fix to ensure the bent bar rounding value is not applied to straight bars in a specific sequence.
52. Fix to the Special Bar feature to read the correct file path in a specific sequence.
53. Fix to the Override Revision Mark when '-' is used for the first issue.

54. Fix to the CADS_RC_REDRAW command to avoid bars with coupler 'explode' in a specific sequence.
55. Fix to the Overstock length feature to work with the DIMENSIONMINIMUMS configuration in a specific sequence.
56. Fix for AutoCAD Map3D 2013 to avoid an application crash while closing the application.
57. Fix to printed Reports and Bar Schedule on Drawing to report Unit weight in a specific sequence.
58. Fix to Bar Reference to avoid incorrect reporting as a non-linked entity in a specific sequence.
59. Fix to Tapered Ranges for inconsistencies between Bar Schedule and drawing in a specific sequence.
60. Fix to delete viewport border in model space if the viewport is deleted in the paper space.
61. Fix to the Share Range feature which failed to execute in a specific sequence.
62. Fix to incorrect text size when the drawing is saved in paper space.
63. Fix to the AutoCAD drop down menu to display properly in a specific sequence.
64. Fix to the Area detailer to draw the correct envelope in a specific sequence.
65. Fix to the Bar Reference to display the correct Bar Mark in the Over Stock Length group.
66. Fix to the Multiple Pitch Range to update center to center spacing during the Stretch Bar command.
67. Fix to the CADS_RC_REDRAW command which incorrectly scaled the Bar Reference in a specific sequence.
68. Fix to the configuration \$SHPCD field to display the Bar Shape name in the label to match the display in the Bar Schedule.
69. Fix to the AutoCAD Save As command to avoid application crash in a specific sequence.
70. Fix to avoid an incorrect revision warning message during drawing opening.
71. Fix to retain the configured folder path for the Bar Schedule Configuration file.
72. Fix to Range Length to update while editing the Slope Length.

Version 9.11 Service Pack (Build 1713)

1. Fix for an inconsistent crash while opening RebarCAD if licensed using a WAN Network dongle.

Version 9.11

1. Support for AutoCAD 2013, AutoCAD Architecture 2013, AutoCAD Civil 3D 2013, AutoCAD Map 3D 2013, AutoCAD Mechanical 2013, AutoCAD MEP 2013 and AutoCAD Structural Detailing 2013.
2. CADS Stock Bar Optimiser now integrated with the Schedule.
3. New message implemented while multi editing bars with non-standard hooks.
4. Help button added to the ribbon menu by default.
5. New message to warn users before overwriting existing Production Output and Electronic Schedule files.

6. Fix to refresh the Schedule on drawing command to update all Schedules placed on the drawing when bars with the same bar mark are assigned to different Schedules.
7. Fix to the Drawing Audit command to add highlighted entities into the previous selection list of AutoCAD.
8. Fix to an application crash while closing multiple drawings through the AutoCAD Quick View command.
9. Fix to the schedule data mismatch issue which displayed data from another drawing in certain sequences.
10. Fix to the Oversized bar end proportional to bar size feature to draw section views for straight bars.
11. Fix to AutoCAD leader (ADL) lines to avoid merging of leader lines after executing specific RebarCAD tools.
12. Fix to the Check Database routine to avoid an application crash when 'Display dimensioned sketches' configuration is switched on.
13. Synchronisation of release status with file feature now updated to exclude Drawing Set Number while updating the release status.
14. Fix in "Usasm_config.xml" file to display correct path for the Bid Structure import file.
15. Fix to the Double Indicator Range to detailer bar leader inside the VPM layout in a specific sequence.
16. Fix to the Compact Bar mark feature which corrupted the drawing in a specific sequence.
17. Fix to the un-issue schedule command from the Schedule which triggered an unhandled exception error in a specific sequence.
18. Fix to OSL bars in curved areas for a specific sequence in the Area detailer.
19. Fix to an application crash when importing a large Bid Item file in a specific sequence.

Version 9.10

1. New feature to view offcut bars while detailing.
2. New feature to convert plines to bars, linear ranges and tapered ranges.
3. Drawing audit feature rewritten to enhance performance.
4. Additional configuration item in Schedule settings to support length units in centimetres.
5. Option to display centre to centre (c\c) value in the printed reports and schedules placed on the drawing.
6. New feature to wipe out RebarCAD data from an AutoCAD drawing so that RebarCAD drawings could be re-used as templates.
7. Additional configuration item to display oversized bar ends, bar runs and bar in sections, proportional to its bar sizes.
8. Additional configuration option to specify snap setting while placing leader.
9. Additional configuration option to justify range text annotation for multiple pitch ranges.
10. Direct link to Schnell fabrication system.

11. Fix to the Member title dialog which displayed error messages while editing Member title in older version drawings.
12. Fix to Tapered ranges where the abbreviated text was not displayed in the printed reports in a specific sequence.
13. Fix to the multiple bar edit feature to ensure Label notes are updated when any bar parameter is updated along with the bar spacing value.
14. Fix to the pile cap detailer tool to detail pile caps with seven numbers of piles properly.
15. Fix to Schedule which displayed an error while deleting blank lines in a specific sequence.
16. Fix to the Change range type tool in which the alternate range was detailed improperly in a specific sequence.
17. Fix to the Accessories list where the undo command created duplicate accessories lists.
18. Fix to the Beam detailer macro tool which detailed incorrectly after using the "Save as v9.07 drawing..." command.
19. Fix to the Edit range dialog to avoid a crash when the number of bars is set as 1.
20. Fix to the Area detailer where changing cover value to "0" displayed error messages.
21. Additional validation in the Draw bar dialog to avoid drawing corruption when the bar mark is entered as '00'.
22. Fix to the Member and Release dialog to accept special characters for Member title description and Release description respectively.
23. Fix to the Order materials dialog which displayed the weight of bars unassigned to a release in a specific sequence
24. Fix to the Soule production output file in which Date and Time wanted field always defaulted to the current date and time.
25. Fix to the production output files which displayed an incorrect quantity for part of the tapered range bars created in a specific sequence.

Version 9.09 Service Pack (Build 1611)

1. Fix to incorrect placement of AutoCAD dimensioned leader when the vertical text placement is aligned as 'centered'.
2. Fix to the Ticks and tag feature in the VPM environment where the tag text got placed in the "0" layer instead of the configured layer.
3. Additional configuration items in the Tick and tags feature to use AutoCAD leader instead of the standard RebarCAD Leader.
4. Additional configuration items to configure range end marker arrows for single and double indicator ranges.
5. Feature to place bar pointers on a range line when not intersecting with the bar indicator reinstated.
6. Fix to the ASA production output file in the 64 bit version to ensure the 'BC' value is printed out in the correct format.

Version 9.09

1. Support for AutoCAD 2012, AutoCAD Architecture 2012, AutoCAD Civil 3D 2012, AutoCAD Map 3D 2012, AutoCAD Mechanical 2012, AutoCAD MEP 2012 and AutoCAD Structural Detailing 2012.
2. New option to save RebarCAD v9.09 drawings into the RebarCAD v9.04 – v9.07 format. RebarCAD v9.09 drawings are compatible with RebarCAD v9.08 drawing format.
3. Option to display Bar Label notes in Bar Schedule on Drawing and BBS Reports.
4. New feature to display dimensioned Shape Code diagrams in the Bar Label.
5. New feature to configure and place multiline Bar Labels.
6. Special Bar feature now set to automatically create Shape Diagram sketch for Bar Schedule on Drawing and BBS Print Reports.
7. Additional configuration items in the Special Bar feature to display the Special Bar dialog when called from the Draw Bar dialog, to automatically assign leg dimensions when converting AutoCAD polylines into special bars and to automatically name the new Bend Type using predefined Shape Code prefix.
8. New feature to show the Revision Cloud for only the Current Revision or for All Revisions.
9. Bar label feature enhanced to allow all Object Snap (OSNAP) modes in use, while placing Bar Leader instead of just the 'Nearest' mode.
10. New configuration to control the size and position of AutoCAD blocks in Bar Label format.
11. New configuration to specify offset distance when placing the Bar Mark inscribed in a circle in Bar Label.
12. New feature to control Range annotation Height and Text Style.
13. Additional option to display straight Bar Marks in RebarCAD standard output (CSF format) file.
14. Additional configuration option to configure End Treatment value for Coupler and Thread labels.
15. GLO commands – “Show all Bars”, “Suppress all Bars” and “Ignore” reinstated.
16. Fix to Accessories List which caused performance issues in a specific sequence.
17. Fix to AutoCAD leader to avoid incorrect Leader placement in a specific sequence.
18. Fix to the CADs_RC_REDRAW command which exploded Bars and Ranges in a specific sequence,
19. Fix to the Draw Bar dialog to avoid showing incorrect error messages with USSIMP.DEF settings,
20. Fix to the Over Stock Length feature to redraw Bar Labels in a specific sequence.
21. Fix to the Bar Schedule on Drawing feature to update the Member\Release description when refreshed.
22. Fix to the Bar Label configuration to report correct Bar Length, when configured.
23. Fix to the Revision Table to display the date format as configured in the operating system.
24. Fix to display Bar Label List on Drawing when only straight bars are present in the drawing file.
25. Fix to the Bar Schedule view which failed to display certain Bar Sizes in a specific sequence.
26. Fix to the Bend Schedule on Drawing command to avoid listing straight bars when refreshed.
27. Fix to Member, Release, Bid Item and Bid Structure dialogs to accept special characters.

28. Fix to the Bar Schedule view & Order Materials dialog to display correct weights in a specific sequence.
29. Fix for incorrect Bar References scaling when configured to use AutoCAD Leaders.
30. Fix to the Menu Load command in certain sequences.
31. Fix to the Revision feature which sporadically corrupted the revision history and also affected drawing file performance.
32. Fix to the Alternate Range which displayed the incorrect number of Alternate bars in a specific sequence while running the check database command.

Version 9.08 Service Pack (Build 1548)

1. Fix in DEF file migration utility to automatically update DEF files created in earlier versions of CADSR.

Version 9.08

1. New feature to convert Poly line into special bars, Special Bar creator improved to allow optional hooks.
2. Stock Bar Optimiser feature available to produce bar cutting schedule and reduce scrap.
3. Option to specify Label rotation angle when drawing Bars or Ranges.
4. Bar Schedule now supports 20 numbers of user fields which can be used in the Schedule on Drawing or Printed Reports.
5. Drawing data structure restructured to improve performance while opening and saving the drawing.
6. New feature to Search bars of specific bar marks/size/bend type or bar grade in the Bar Schedule.
7. Coupler data updated as per latest available datasheets.
8. Support for GTECH couplers.
9. New feature to specify and apply End Treatments to bar ends and to view the End Adjustment Value in the coupler dialog.
10. Highlight Bar feature improved to highlight labels along with bars.
11. Option to swap bar marks for Alternate Range from Edit Range dialog.
12. Bars can be assigned to Bid Item and Bid Structure in addition to Release, Drawing Sheet and Member. Configuration option available to enable or disable the same.
13. New feature to provide Release Description for each Release.
14. Option to sequence Release, Bid Item, Bid Structure and Member in their respective dialog boxes.
15. Additional option to select all bars un-assigned to any Release to a valid Release. This option is available for Bid Items too.
16. Configuration option to synchronise project based Couplers, Release, Bid Item & Bid Structure from an external file.
17. Harris (*.TSV) file format in Production Output File and Electronic Schedule file is now supported.

18. Configuration option to notify when a drawing is opened or edited.
19. Critical dimension for bars now printed in a specific location in the aSa production output file.
20. RC Productivity tools updated to work with new IS 2502 shapes.
21. Fix to Circular Bar Arrangement to draw bars in concentric circles in a specific sequence.
22. Fix to the Schedule on Drawing to report accurate Total Length in a specific sequence.
23. Fix to the SteelPAC (*.SDI) format to allow for IS 2502 contract standard.
24. Fix to a number of defects to ensure AutoCAD texts are scaled properly in the VPM environment.
25. Fix for Bar Reference copied with Bar and Label even if they are not selected.
26. Fix to the stretch command not working properly while stretching bar run in a specific sequence.
27. Fix to the Extract Data command which incorrectly updated a Bar Mark in a specific sequence.
28. Fix to the save command to ensure the drawing is saved with Schedule on Drawing in a specific sequence.
29. Fix to a specific sequence in the aSa Production output file to ensure Release is ordered only when the Job Number is available.
30. Fix to allow data item Alternate Size and Material for Schedule on Drawing and Printed Reports.
31. Fix to ensure Member Description and Release Description are updated correctly in the Schedule on Drawing header.
32. Fix to ensure the file output from the Free Form schedule is as per configured units.
33. Fix to ensure Number of Members is not zero in the Member dialog.
34. Fix to reinstate the Shape Code column field in the Free Form view in a specific sequence.
35. Fix to the Schedule on Drawing to ensure the Total Length is displayed in a configured unit.
36. Fix to the Schedule on Drawing to ensure dimensions less than a feet in imperial unit are prefixed with zero.
37. Fix to a specific sequence in the dynamic title blocks to ensure Drawing Number is read correctly.

Version 9.07 Service Pack (build 1498)

1. Fix to a specific sequence of the stretch command for fixed pitch ranges and multiple pitch ranges, which updated range length with an incorrect value.
2. Fix to a specific sequence in the Match bar command which failed to update bar marks with a prefix.
3. Fix to incorrect scaling of Bar references in the VPM environment when copy/pasted from another drawing.
4. Fix to the Match bar command line entry to accommodate values other than *Yes* or *No*.
5. Fix to the Extract data command which missed updating the bar mark with the correct bar diameter.
6. Fix to ensure the CADS RC Online feature looks for new updates only as per the configuration set by the user.

Version 9.07

1. Support for AutoCAD 2011 (and all verticals).
2. Support for RC Productivity Tools in 64 bit operating systems.
3. Support for importing Eurocode 2 design jobs into CADS RC.
4. Fix to the check database command which failed to identify and correct incorrect bar label.
5. Fix to the title block configuration and connecting to the website every time you open CADS RC in Windows Vista and Windows 7 machines.
6. Fix done to the Mesh Calculator configuration when adding new mesh types.
7. Fix to the Radial Bar Detailer default grade type.
8. Fix to bar schedule data error for Alternate Ranges in specific sequence.
9. Fix to Step Taper Range to ensure the bar data is correctly updated to the bar schedule.
10. Fix to SMSD resulting in bar schedule data mismatch in a specific sequence.
11. Fix to the stretch command not working properly for an Alternate Fixed Pitch/Alternate Multiple Pitch Bar Run.
12. Fix for the range line exploding problem in a specific sequence.
13. Fix to the bar label revision cloud not appearing in a specific sequence when doing a bar edit.
14. Fix to Split Range where the number of bars were shown as zero in a specific sequence.
15. Fix to the Add Chair feature when placing it with the No Bar View option.
16. Fix to the production output files which included deleted bar information in a specific sequence.

Version 9.06

1. Support for 64 bit versions of Windows 7®, Windows Vista® and Windows XP®.
2. Support for AutoCAD 2010 installed with AutoCAD Structural Detailing Suite.
3. Improved performance for the bar schedule feature.
4. Configuration option to allow combining of bar marks spread across different members.
5. Drawing audit feature improved to identify and highlight bars un-assigned to any drawing sheet, member or release.
6. Option to remove configured drawing sheet title blocks using the Configure Title Block dialog.
7. Additional check for bars un-assigned in any drawing sheet during operations such as drawing sheet issue, print report and place bar schedule on drawing.
8. Fix to the Assign bars to release command to reinstate by Member and by Drawing sheet option.
9. Fix for crash in ACAD 2010 when the purge command is used.
10. Fix for incorrect placement of Revision clouds and Call out symbols.
11. Fix for ACAD crash in Vista while opening CADS RC installed with CADS RC Palettes pre-release.
12. Fix to validate bar mark entry such that it does not contain any special characters.
13. Fix for the title block configuration utility which caused a delay in opening certain drawing files.

Version 9.05

1. Support for AutoCAD 2010 and all verticals (AutoCAD Architecture 2010, AutoCAD MEP 2010, AutoCAD Civil 3D 2010, AutoCAD Map 3D 2010, and AutoCAD Mechanical 2010).
2. Configuration to control offset between the revision cloud and label.
3. Configuration to place a weight summary table on drawing for “all” or for selected Drawing sheets/Members/Releases.
4. Ability to place the schedule on a drawing even for *Unassigned* Drawing sheet/Member/Release.
5. Supports bar shapes with predefined couplers.
6. Configuration option extended to show Members/Releases dialog while drawing the first bar.
7. Option to control “99-”character prefix to special shape code name in SteelPac electronic output file.
8. The DEF file used in the drawing is displayed in draw bar and edit bar dialogs.
9. Configuration option for tapered ranges to control the text line description and its position.
10. Fix to revision mark corruption on opening issued drawings created in previous versions.
11. Fix to edit header and footer fields to retain the entered values after saving the drawing
12. Additional filter options in “Assign bars to release” dialog.
13. Option to assign partially un-ordered bars to selected release.
14. Configuration option for ASA output to display the bar mark for straight bars.

15. Configuration option to control the display of imperial dimensions less than 1' with or without leading 0' character.
16. Fix to the ASA output to remove duplicate 2R lines.
17. Fix to the RMS output to support four digits of total number of bars value.
18. Fix to the Soule output files displaying junk characters while importing.

Version 9.04

1. Support for AutoCAD Mechanical.
2. Support the display of actual dimensions on schedule diagrams.
3. Facility to edit (override) a bars revision level and page header revisions.
4. Un-combine command.
5. Configuration to control whether bar mark is reported for straight bars.
6. Partial un-order facility.
7. Ability to place multiple schedules on a drawing in one operation.
8. Enhanced highlight bar in drawing command.
9. Specify revision level for each revision type configuration option.
10. Removal of errors caused by title block fields.
11. Drawing re-use warning on Check Database command.
12. Refresh all viewports commands.
13. Additional CSF data format configuration settings.
14. Stability improvements to expand operational boundaries.
15. Additional configuration to control the presentation of shape diagrams within reports.
16. Rationalisation of coupler configurations.
17. Member and release description fields available for review from the schedule dialog.
18. Fix to incorrect revisions when stretching ranges.
19. Fixes to the Steelpac output so as to make diagram identification consistent.
20. Fix to the date format issues within the Steelpac output.
21. Fix to rescaling of annotation on closing/saving a drawing.
22. Reduction in permissible stock lengths.
23. Weight units shown in summary tables.
24. Numerous fixes to presentation problems in Excel.
25. Fix to the problem causing loss of ribbon icons following installation of AutoCAD 2009 updates.
26. Resolution to defect that causes "command in progress" errors to appear.
27. Confirmation requested on pressing cancel from Configure Title Block dialog.
28. Improved accessibility to Excel and PDF output features.

29. Restriction on use of obsolete re-sync command Selection of fixes to the RC tools including Area Detailer, Split Range, etc.
30. Batch import into CADS-BL (Beam Link).
31. Support for longer member title names.

Version 9.03

1. Support for AutoCAD 2009 (and all verticals).
2. CADS RC Ribbon offered in AutoCAD 2009, together with extended tooltips.
3. Schedule menu and toolbar replaced with ribbon panel.
4. Improved icons on all ribbons, toolbars and ribbons. Full support for the AutoCAD *Use Large Buttons for Toolbars* feature.
5. Specification of up to three separate BDF files now possible. Additional sort options allow the shapes from these files to be sorted and grouped.
6. Re-instated v8 approach to the product launch from the desktop icon. Support for AutoCAD parameters such as /t to load a specific DWT file now restored.
7. No need for administrator rights when installing for Windows Vista.
8. Raft of memory management improvements aimed at improving product stability.
9. Data integrity checks added to all output options.
10. Revision clouds and symbols now placed on different layers.
11. Fixed the problem that prevents double-click editing of bars when true type fonts are configured.
12. Controls used for report printing updated (DevExpress v7.2).
13. The highlight bar in drawing feature now supports multiple drawing sheets.
14. Use of legacy v8 DCL files is detected and a warning supplied.
15. The Save As v8.4 feature now offers advice on saving to previous DWG formats.
16. Numerous stability improvements following investigations into damaged drawings.
17. Products now grouped under the "Detailing" folder within the Windows Start menu.
18. Various fixes that ensure the schedule accurately reflects bars drawn via the RC tools.
19. Shape diagrams now coming through to RTF format.
20. Numerous fixes to problems related to the display of shape sketches within the schedule.
21. Fix to the problem of electronic transfer files not being generated when a fixed location is specified.
22. Free-form report now sorts correctly by default and formats weights as per localisation settings.
23. All printed reports converted to print to A4 instead of Letter layout.
24. Report designer now offers a field equivalent to the *Drawing Sheet Revision Mark*.
25. Now only the appropriate dimension columns are shown by default in the schedule.
26. Resolution of problems pertaining to use of the compact bars command when bars had been ordered.

27. Various fixes related to the incorrect scaling of entities by Viewport Manager.
28. User fields now shown in the header even when multiple pages are output.
29. The AutoCAD last and previous operator is being wiped by CADS RC.
30. Support for specification of a blank first revision level added.
31. Shape table scaled and formatted to match v8.
32. Revision table now adopts the date format from Windows.
33. Fix to the problem whereby cell width is enlarged for schedules placed in paperspace.
34. Configuration that controls the display of run-out dimensions rectified.

Version 9.02

1. A number of key fixes have been made to resolve issues that caused either error messages on entering the schedule or for the data shown in the schedule to be out-of-step with the drawing.
2. The Check Database command has been extended to identify and correct any discrepancies between the drawing and schedule.
3. A range of performance improvements have been implemented especially in relation to prolonged periods of use with the schedule continually open.
4. Auto-combine feature added.
5. The resetting of the OSNAP settings following use of CADS RC commands has been resolved.
6. New highlight bar in drawing feature added to the right click menu on the formatted view of the schedule
7. Feature to automatically migrate V8 DEF files introduced.
8. Simplification of the title block (drawing sheet) configuration workflow.
9. Option to abbreviate the reporting of tapered ranges included.
10. Array of area detailer improvements including improved label placement, support for OSL ranges, and tapered range usage. (These will come through to SMSD).
11. Range of AutoCAD Dimension Leader (intelligent leader) improvements.
12. Locked lines issuing and revision setting now supports improved control over formatting.
13. Locked lines now set as the default issue and revision configuration option.
14. Improved defaulting of the current drawing sheet and member throughout the program.
15. Fix to the match bar problem when bar marks exceed two characters.
16. Text font improvements related to schedule on drawing customisation.
17. Header date fields now fully editable and stay set following issue, etc.
18. Resolution of defects that result in drawing damage when saving following a close operation.
19. Removal of restrictions on saving to a previous version of AutoCAD.
20. Combined E/R column supplied in the schedule dialog.
21. Tutorial extended and quality of screen shots improved.
22. Improved alignment of program headers to standard report headers.

23. Editing of OSL bars now successfully triggers revision warning.
24. Improved locating of slide files created via the special bar creator.
25. Range of stability and usability improvements to the RC tools and detailers.
26. Substantial ranges of additional minor fixes to schedule related functionality.

Version 9.01

1. New schedule with attractive, interactive and friendly user interface (see What's New & Getting Started with V9 Guide for more information).
2. Support for Microsoft Windows Vista.
3. Support for AutoCAD 2008 (and all verticals).
4. Create multiple drawings and schedules from a single DWG file. Support for working across AutoCAD layouts, via drawing sheets.
5. Fully featured issue and revision system including automatic generation of revision clouds and tables.
6. Produce quick reports and queries using the new free-form report generator.
7. Multiple sorting and formatting options.
8. Set your company standards using the simple and concise schedule configuration.
9. Support for Autodesk Civil 3D, Autodesk Building Systems, Autodesk Map3D (2006 and above).
10. Numerous installation improvements and applications now load automatically.
11. Improved product documentation.
12. Tip-of-the-day and usage tips added.
13. Extensive improvements to the RC tools.
14. Range of CADs Viewport Manager fixes/improvements.