

CADS Steelwork 2026.0

Release Notes



GLOBAL CONSTRUCTION
SOFTWARE AND SERVICES



Microsoft
Partner

Contents

Release Notes	3
Version 2026.0 [Oct 2025]	3
Version 2025.0 [27 Sep 2024]	3
Version 2024.0 [08 Aug 2023].....	4
Version 2023.10 [24 Feb 2023]	4
Version 2023.0 [16 Sep 2022]	4
Version 2022.20 [22 Apr 2022]	4
Version 2022.10 [02 Mar 2022]	5
Version 2022.0 [09 July 2021].....	5
Version 2021.10 [08 December 2020]	5
Version 2021.0 [05 Aug 2020].....	6
Version 2020.0 (Build 651).....	6
Version 2019.0 (Build 503).....	6
Version 2018.1 (Build 483).....	6
Version 2018.0 (Build 470).....	7
Version 2017 (Build 451).....	7
Version 2016.1 (Build 432).....	8
Version 2016 (Build 427).....	8
Version 2015 (Build 237).....	8
Version 8.36 (Build 215).....	8
Version 8.35 (Build 212).....	8
Version 8.34 (Build 204).....	9
Version 8.33 (Build 182).....	9
Version 8.32 (Build 179).....	9
Version 8.29 (Build 172).....	9
Version 8.27 (Build 169).....	9
Version 8.25 (Build 165).....	10
Version 8.25 (Build 163).....	10
Version 8.24 (Build 162).....	10
Version 8.24 (Build 155).....	10

Release Notes

Thank you for upgrading to the latest version of **CADS Steelwork**.

These release notes summarise the enhancements and corrections that have been made for each release of the product.

Version 2026.0 [Oct 2025]

Version Numbers

Product	Version
CADS Steelwork	v2026.0 (Build 5119)
CADS Scale	v2026.0 (Build 5110)
CADS Viewport Manager	v2026.0 (Build 5110)
CADS Drawing Environment	v2026.0 (Build 5110)
CADS AutoCAD Support	v2026.0 (Build 5105)
CADS Software Licence Manager	v25.6
CADS Application Support	v2.0 (Build 562)
CADS Detailing Windows Support	v1.0 (Build 17)

1. AutoCAD Support

CADS Steelwork supports the following Autodesk platforms:

AutoCAD Vertical	Supported Versions
AutoCAD	2026
AutoCAD Architecture	2026

Version 2025.0 [27 Sep 2024]

1. AutoCAD Support

CADS Steelwork supports the following Autodesk platforms:

AutoCAD Vertical	Supported Versions
AutoCAD	2025
AutoCAD Architecture	2025

Version 2024.0 [08 Aug 2023]

1. AutoCAD Support

CADS Steelwork supports the following Autodesk platforms:

AutoCAD Vertical	Supported Versions
AutoCAD	2022, 2023 & 2024
AutoCAD Architecture	2022, 2023 & 2024

Version 2023.10 [24 Feb 2023]

1. AutoCAD Support

CADS Steelwork supports the following Autodesk platforms:

AutoCAD Vertical	Supported Versions
AutoCAD	2021, 2022 & 2023
AutoCAD Architecture	2021, 2022 & 2023

Version 2023.0 [16 Sep 2022]

1. AutoCAD Support

CADS Steelwork supports the following Autodesk platforms:

AutoCAD Vertical	Supported Versions
AutoCAD	2021, 2022 & 2023
AutoCAD Architecture	2021, 2022 & 2023

Version 2022.20 [22 Apr 2022]

1. AutoCAD Support

CADS Steelwork supports the following Autodesk platforms:

AutoCAD Vertical	Supported Versions
AutoCAD	2020, 2021 & 2022
AutoCAD Architecture	2020, 2021 & 2022

Version 2022.10 [02 Mar 2022]

1. AutoCAD Support

CADS Steelwork supports the following Autodesk platforms:

AutoCAD Vertical	Supported Versions
AutoCAD	2020, 2021 & 2022
AutoCAD Architecture	2020, 2021 & 2022

Version 2022.0 [09 July 2021]

1. AutoCAD Support

CADS Steelwork supports the following Autodesk platforms:

AutoCAD Vertical	Supported Versions
AutoCAD	2020, 2021 & 2022
AutoCAD Architecture	2020, 2021 & 2022

Version 2021.10 [08 December 2020]

1. AutoCAD Support

CADS Steelwork supports the following Autodesk platforms:

AutoCAD Vertical	Supported Versions
AutoCAD	2019, 2020 & 2021
AutoCAD Architecture	2019, 2020 & 2021

2. Defect fixes

A few defects related to Windows 10 Pro Version 20H2 Operating System have been fixed.

Version 2021.0 [05 Aug 2020]

1. AutoCAD Support

CADS Steelwork supports the following Autodesk platforms:

AutoCAD Vertical	Supported Versions
AutoCAD	2019, 2020 & 2021
AutoCAD Architecture	2019, 2020 & 2021

Version 2020.0 (Build 651)

1. AutoCAD Support

CADS Steelwork supports the following Autodesk platforms:

AutoCAD Vertical	Supported Versions
AutoCAD	2018, 2019 & 2020
AutoCAD Architecture	2018, 2019 & 2020

2. Defect fixes

A defect in opening the global configuration dialog has been fixed.

Version 2019.0 (Build 503)

1. AutoCAD Support

CADS Steelwork supports the following Autodesk platforms:

AutoCAD Vertical	Supported Versions
AutoCAD	2017, 2018 & 2019
AutoCAD Architecture	2017, 2018 & 2019

Version 2018.1 (Build 483)

1. AutoCAD Support

CADS Steelwork supports the following Autodesk platforms:

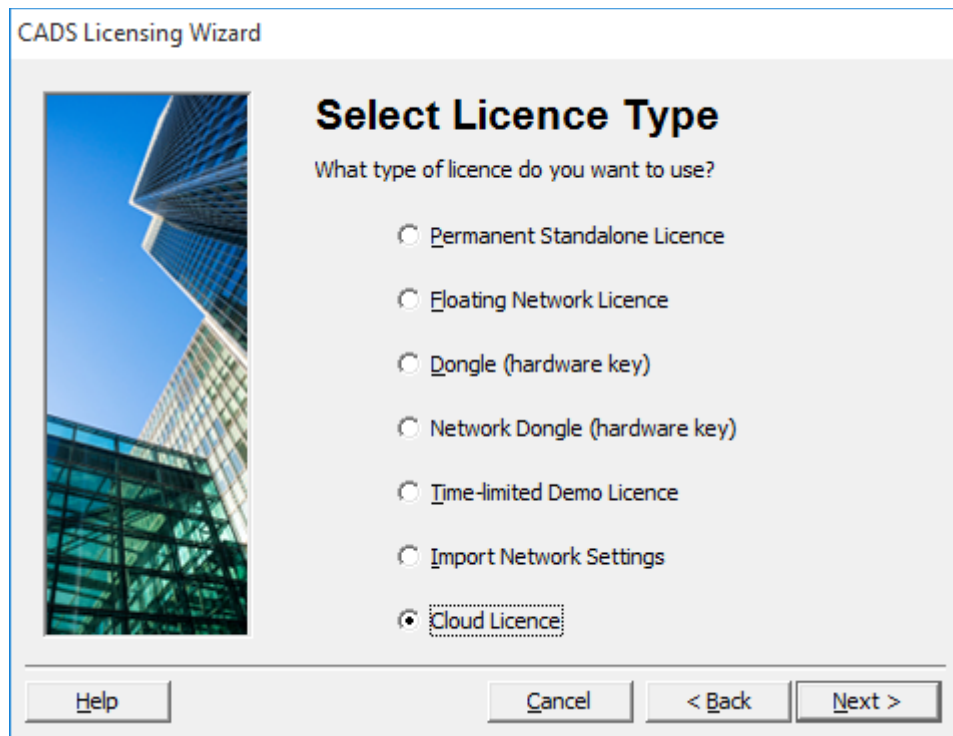
AutoCAD Vertical	Supported Versions
AutoCAD	2016, 2017 & 2018

AutoCAD Architecture

2016, 2017 & 2018

2. Licensing

Licensing is enhanced to support cloud licensing.



Version 2018.0 (Build 470)

1. AutoCAD Support

CADS Steelwork supports the following Autodesk platforms:

AutoCAD Vertical	Supported Versions
AutoCAD	2016, 2017 & 2018
AutoCAD Architecture	2016, 2017 & 2018

Version 2017 (Build 451)

1. AutoCAD Support

CADS Steelwork 2017 supports the following Autodesk platforms:

AutoCAD Vertical	Supported Versions
AutoCAD	2015, 2016 & 2017

AutoCAD Architecture	2015, 2016 & 2017
----------------------	-------------------

Version 2016.1 (Build 432)

1. AutoCAD Support

CADS Steelwork 2016.1 supports the following Autodesk platforms:

AutoCAD Vertical	Supported Versions
AutoCAD	2014, 2015 & 2016
AutoCAD Architecture	2014, 2015 & 2016

2. Defect fixes

A defect has been fixed in which the sections and purlins were placed away from the insertion point when the ORTHO mode was set to 'ON'.

A few defects were fixed while generating the grids, drawing claddings, drawing members, placement of section and section arrays with the rotated UCS.

A defect has been fixed, in which moving the origin point of the drawing away from (0, 0), caused the members to offset from the insertion point.

Version 2016 (Build 427)

1. AutoCAD Support

CADS Steelwork 2016 supports the following Autodesk platforms:

AutoCAD Vertical	Supported Versions
AutoCAD	2014, 2015 & 2016

Version 2015 (Build 237)

1. AutoCAD 2015 support – This program supports AutoCAD 2015.

Version 8.36 (Build 215)

1. AutoCAD 2014 support – This program supports AutoCAD 2014.

Version 8.35 (Build 212)

1. AutoCAD 2013 support – This program supports AutoCAD 2013.

Version 8.34 (Build 204)

Corrections made:

1. Fatal error while selecting section view purlins command.

Version 8.33 (Build 182)

1. AutoCAD 2012 support – This program supports AutoCAD 2012.

Version 8.32 (Build 179)

1. 64 bit windows operating system support – This program supports 64 bit windows operating systems (Windows 7®, Windows Vista® and Windows XP®).
2. AutoCAD 2011 support.

Corrections made:

1. Fatal error in AutoCAD 2010 on opening a new drawing or when inserting a header from the schedule.
2. Fatal error when selecting a few section types.
3. Adding a label to ridge flash causes a fatal error.
4. Drawing members using the member array failed to place the schedule on a drawing while automatic schedule toggle is ON.
5. Editing a schedule line and selecting a blank schedule line triggers a fatal error.
6. The escape command in a specific sequence causes a fatal error.
7. The labelling Purlin in a specific sequence causes a fatal error.
8. Inserting a block by snapping the endpoint of the title block triggers a fatal error.

Version 8.29 (Build 172)

1. AutoCAD 2010 support – This program supports AutoCAD 2010.

Version 8.27 (Build 169)

1. The Ribbon user interface available in AutoCAD 2009 is supported.

2. A new workspace for “Steelwork” was added so that the Steelwork toolbars can be easily restored if the workspace is changed.

Version 8.25 (Build 165)

1. Windows Vista Support – This program supports 32 bit Windows Vista operating system.
2. AutoCAD 2008 support – This program supports AutoCAD 2008.

Version 8.25 (Build 163)

1. This version has some changes related to the new branding and internal folder structure.

Corrections made:

1. The command “Edit Member → Invert Member” did not work properly when the same command was repeated over the same member.
2. The command Edit member → Change Style command causes AutoCAD to crash if the “All” option is selected for selecting the objects.

Version 8.24 (Build 162)

1. This version supports AutoCAD 2007.
2. This version does not include any corrections.

Version 8.24 (Build 155)

1. Tool tip Improvements - Tool tip for weight is included for the section view. The tool tip is displayed as multiple lines for better readability.
2. Erase Schedule Lines - Schedule lines can be erased using AutoCAD commands.
3. A command to access the Readme file is included.

Corrections made:

1. Drawing a curved side view of CUB & CUC (castellated) sections with the profile option caused AutoCAD to crash.
2. In the elevation view of the CUB and CUC types, end holes were not correctly drawn i.e. there was a bigger gap at the ends in certain cases.
3. While trying to hide the L section that is mirrored behind I section (on top), the L section changed the orientation.

4. While drawing RSUA / RSEA sections in the vertical orientation and right handing, the program did not allow the alignments at the left top and bottom.
5. Erasing the schedule on drawing and placing the header again showed the schedule dialog repeatedly.
6. Placing of a second schedule header caused misplacement of subsequent schedule lines, and the loss of existing schedule lines.
7. A section view's length was not initialised with zero value.
8. Adding a new view to a portal that was generated using the portal generator resulted in AutoCAD crashing.
9. Enquiry-> Weight member reported the weight as zero for a section view of a member.
10. The lengths in the schedule for section view were showing zero.
11. When CADS RC is loaded along with CADS SW, the schedule lines were placed near AutoCAD's origin.
12. 3D Visualisation did not work properly in AutoCAD 2006.